



FRIDAY, APRIL 10, 2026

**1:00 PM CST • KIST LIVESTOCK
MANDAN, NORTH DAKOTA**



Welcome **CATTLE PRODUCERS TO THE** 2026 TOPP ANGUS ANNUAL BULL SALE

Welcome,

On behalf of our family and everyone at Topp Angus, we want to welcome you to the 2026 Annual Sale. Whether you've bought bulls from us before or are considering Topp Angus genetics for the first time, we truly appreciate you taking the time to look through this year's offering.

We are blessed to be in a time of excellent cattle prices and the demand for good genetics has never been stronger. An investment in Topp Angus cattle will not only make an immediate impact on your calf crop, but will leave a lasting, positive impact on your cowherd for many generations to come.

This year, we are excited to offer an outstanding set of 150 bulls that are backed by generations of maternal strength, structural integrity, and performance that you can depend on. These bulls have been raised to optimize soundness and longevity. The bulls have all passed a semen evaluation and with many people breeding later in the year, we offer a 100% guarantee on a second passing evaluation prior to turnout. Sometimes injuries occur during the breeding season and to minimize the risk in your investment, we offer a first year breeding guarantee.

We are equally excited to offer a select set of registered females from the heart of our program. These females represent the strong cow families developed over the years.

Along with the registered heifers is also an elite group of commercial females from our operation and longtime customers Mac & Nicole Hoerner of Richardton, ND. Mac & Nicole's bull selection and their overall attention to detail is extremely evident in this high-end group of females. These females are productive, maternal, and built for longevity.

With the high demand for quality cattle today and for years to come we invite you to consider Topp Angus not only to purchase quality cattle but also as an outlet for your high-end commercial females. If your herd is strongly influenced by Topp Angus genetics we are now offering an opportunity to market your females on our sale. Please contact us for more details.

We cannot emphasize enough - our sale day is only the beginning. When you invest in a Topp Angus bull or female, you are not just making a purchase; you are starting a relationship with us. We take great pride in standing behind our cattle and being a resource for our customers long after the gavel falls. At the end of the day, we measure our success by the success of the people who use our genetics and we are grateful for the opportunity to be a part of your operation.

We look forward to visiting with you. Please don't hesitate to reach out with any questions or to discuss the offering at any time.

Thank you again for your support and we look forward to seeing you April 10th!

Paul Topp





TOPP ANGUS

PAUL TOPP, 701-650-8371
JESS CARLSON, 701-320-0726
HUDSON TOPP, 701-659-0360
8205 14th Street NE • Grace City, ND 58445
Email: toppangus@daktel.com

TOPPANGUS.COM  

*Your Visit
is Always
Welcome*



From Grace City: 5 mi. North on 82nd Avenue
and 1/2 mi. East on 14th Street.

Bulls on display at the Ranch through April 6th.

Our goal isn't simply to offer you angus bulls; our goal is to offer you the genetics with the consistent, predictable, performance you need to improve your overall profitability.

CONSISTENT.

Consistent goals produce consistent results! This is why we will not chase the latest fads but continue with balanced genetics that will improve your herd for many generations to come.

PREDICTABLE.

Predictable offspring is the result of consistency in our breeding philosophy. Our herd stems from some of the most proven cow families in the angus breed.

PERFORMANCE.

More than just pounds! Our genetics must perform on all levels – functional cows raising heavy calves with value.

MARTIN-TRUDEAU INSURANCE, LIVESTOCK DIVISION

www.Martin-TrudeauInsurance • 1531 W. Elm Street, PO Box 487, Mitchell, SD 57301 • 605-996-3106, 800-450-3106

7.0% OPTION 1: All Risk Mortality (ARM) – 100% Indemnity | Bulls & Females

Livestock Mortality Insurance is extended to indemnify the livestock owner for loss as a result of the death of an animal from natural causes, disease, accident or humane destruction to alleviate incurable and inhumane suffering resulting from a covered peril.

11% OPTION 2: ARM + Accidental External Injury (ACC) – 80% Indemnity | Bulls only | \$10,000+ then 12.5%

Mortality coverage plus coverage for injury causing Permanent infertility (broken penis or stifle). *Requires a current Veterinary Certification (not over 30 days old).*

12.5% OPTION 3: ARM + Accident Sickness & Disease Infertility (ASD) – 80% Indemnity | Bulls Only | \$24,999 MAX

Mortality Coverage plus coverage for injury causing Permanent Infertility (broken penis or stifle). In addition to coverage above, this also includes Total and Permanent Infertility (fever or infections causing infertility or disease). *Requires a current Breeding Soundness Evaluation (not over 30 days old).*

16% OPTION 4: ARM + Comprehensive Infertility (COMP) – 85% Indemnity | Bulls Only | \$25,000+ then 17%

Covers all of the above, plus Frozen Testicles, Testicular Degeneration and infertility caused by abnormalities. Also pays 20% of insured value for temporary infertility of 21 days or more. This does not replace the Breeder's Guarantee. *Requires a current Breeding Soundness Evaluation (not over 30 days old).*

ALL OF THE ABOVE COVERAGES ARE SUBJECT TO APPLICABLE DEDUCTIBLES AND/OR COINSURANCE, MINUS SLAUGHTER VALUE.





FRIDAY APRIL 10, 2026

1:00 PM CST • KIST LIVESTOCK
MANDAN, ND

*Cattle Available for viewing at the Ranch through April 6th.
Cattle on display at Kist Livestock, April 8th - Sale Day.*

AUCTIONEER

SETH WEISHARR.....605-210-1124

SALE DAY PHONES

PAUL TOPP.....701-650-8371
JESS CARLSON.....701-320-0726
HUDSON TOPP.....701-659-0360
KIST LIVESTOCK OFFICE.....701-663-9573

SALE DAY REPRESENTATIVES

Andrew Swanson, *American Angus Association*.....507-829-4133
Kirby Goettsch, *Farm & Ranch Guide*.....605-380-3939
Jory Boote, *Cattle Business Weekly*.....701-789-7047
Kelly Klein, *Tri-State Livestock News*.....701-320-5817
Logan Hoffmann, *DVAuction*.....701-388-2618
Tyler Melroe, *Nutrition Service Associates*.....605-695-3295

Buyers unable to attend the sale may send their bids to anyone in the sale day phones, sale day representatives or auctioneer.

ACCOMMODATIONS

Mention the Topp Angus Sale for a special rate until March 31st at: Bismarck Hotel & Conference Center, 701-258-7700

SIGHT UNSEEN

Call Paul, Seth or any of the sales staff to discuss your needs. Bids are handled in confidence with satisfaction guaranteed.

RETAINED INTEREST & LIABILITY

Topp Angus will retain in-herd semen use on all bulls selling. Full possession and semen revenue interest will sell on all lots unless noted otherwise. Topp Angus assumes no liability for accidents or injuries that occur on the sale premises.

VIDEOS

Videos will be available of all sale lots at toppangus.com and dvauction.com.

CONSISTENT. PREDICTABLE. PERFORMANCE.

LET'S CONNECT

Email: toppangus@daktel.com

www.toppangus.com

Follow us on Facebook and Instagram

GUARANTEE

The cattle are guaranteed to be fertile and reproductively sound. All bulls selling come with a first-year breeding season guarantee against injury or infertility issues. "Breeding season" is defined by the time of turnout to 60 days later. All bulls passed a semen evaluation on February 9. It is recommended to reevaluate semen prior to pasture turnout to ensure that no injury has occurred. The guarantee applies to a second passing semen evaluation prior to the first breeding season. If any fertility problems happen during the first breeding season, a replacement bull will be available until the purchased bull's long-term fertility can be determined. If a bull sustains a breeding injury during the first breeding season, a credit on a future bull purchase will be given. If a bull sustains an injury or fertility issue, we ask that it is evaluated and treated immediately by a veterinarian and a report is provided by the veterinarian doing the evaluation. If the vet determines the bull is no longer a fertile and mobile breeder, the following formula will be used to determine credit issued on a future purchase: Purchase price – salvage value - \$2,000 (if injury related) = credit.

INSURANCE

Insurance available sale day through Martin-Trudeau Insurance.

DELIVERY

All bulls are semen checked and ready to take home sale day. Haul your bull home sale day and receive a \$100/lot discount. Delivery will begin the day after the sale. Bulls will be delivered free of charge within a 600 miles radius of Kist Livestock and at cost after that.

FEMALES

Females must be picked up within 3 days of the sale unless prior arrangements have been made.

ONLINE BIDDING

Online bidding and viewing of the sale available via DVAuction. Advance registration required.

For sale day assistance, contact:

DVAuction Office: 402-316-5460

This sale will be broadcast live on the internet.

DVAuction
Broadcasting Real-Time Auctions
Real time bidding & proxy bidding available.

Watch for the online Sale Book & Videos at:

www.toppangus.com

Print catalog by request only.

Reference Dams



Topp Barbara 7873 | Reg. #19158667
Dam of Lots 5, 6, 7, 8, 201



Topp Barbara 7810 | Reg. #19165152
Dam of Lots 51, 52, 53, 54



Topp Emnlynette 0132 | Reg. #19823737
Dam of Lot 56



Topp Blackbird 1091 | Reg. #20105440
Dam of Lot 18



Topp Marcia 0445 | Reg. #20127338
Dam of Lot 48



Reference Dams



Topp Ruby 1632 | Reg. #20338149
Dam of Lot 126



Topp Barbara 2124 | Reg. #20416668
Dam of Lot 40



MFA Queen Mother 109E | Reg. #20182453
Dam of Lot 63



Topp Barbara 5309 | Reg. #18438163
Dam of Lot 61



Topp Barbara 1656 | Reg. #20324940
Dam of Lot 105

Reference Dams



Topp Barbara 5374 | Reg. #18435774
Dam of Lot 10



Mohnen Erianna 153 | Reg. #18307101
Dam of Lot 106



Topp Peggy 7837 | Reg. #19158724
Dam of Lots 93, 94, 95



Topp Barbara 8426 | Reg. #19419618
Dam of Lot 92



Topp Georgina 6223 | Reg. #18767813
Dam of Lot 103



Reference Dams



Topp Ruby 7861 | Reg. #19165153
Dam of Lot 98



Topp Flower 7927 | Reg. #19158677
Dam of Lot 4



Topp Ruby 7002 | Reg. #18804554
Dam of Lots 129, 130



Topp Donna 7965 | Reg. #19165080
Dam of Lot 117



Topp Donna 7924 | Reg. #19158676
Dam of Lot 14

Reference Dams



Topp Pride 8080 | Reg. #19225372
Dam of Lot 207



Topp Emblynette 9088 | Reg. #19511328
Dam of Lot 31



Topp Barbara 8348 | Reg. #19419586
Dam of Lot 135



Vin-mar Lady Jaye 9143 | Reg. #19515944
Dam of Lot 134



Topp Marcia 9044 | Reg. #19511321
Dam of Lots 3, 21, 131, 132, 133, 202



Reference Dams



JACS Fortune 9720 | Reg. #19769437
Dam of Lot 55



Topp Ruby 9836 | Reg. #19737141
Dam of Lot 33



Topp Barbara 9761 | Reg. #19737125
Dam of Lot 1



Topp Ruby 9847 | Reg. #19737144
Dam of Lot 37



Topp Marcia 9806 | Reg. #119863035
Dam of Lot 81



Spring Bulls





1 TOPP JIGSAW 5022

DOB: 01/06/25 AAA: 21428224 Bull TATTOO: 5022

#S A V Rainfall 6846
Baldrige Jigsaw J523
 20047698 Baldrige Isabel G336

Topp Barron 6148
Topp Barbara 9761
 19737125 #Topp Barbara 5309

#Coleman Charlo 0256
 S A V Blackcap May 4136
 #Spring Cove Reno 4021
 Baldrige Isabel Y69
 #SVA The Donald 4030
 S A V Blackbird 5297
 #Connealy Capitalist 028
 TC Barbara 5016

Sound in his structure, wide-based with great feet, docile, and backed by not only 3 generations of proven foundation females on the bottom side but also industry known, elite females Y69 and 4136 on the top. This bull was built with intention; bred, born, and raised with production and longevity in every inch of his being.

His dam 9761's current ratios: BR 4-96, WR 4-108, & YR 4-106. Her dam 5309 calved this spring with a perfect udder and feet at 11 years of age. 3rd generation foundation dam 5016 produced strong until the age of 15 right alongside her mother at 17 years of age.

5022's sire, Jigsaw not only looks the part in real life with added bone, correct leg structure, ideal hoof shape, base width, and top that's unrivaled but reads it on paper. The combination of this sire with the lifelong focus of the Topp Angus program to build cattle that thrive in the real world with consistency and functionality makes 5022 the obvious choice to start the catalog! 5022's ratios: BR 101, WR 114, & YR 111.

CED	BW	WW	YW	MILK	DOC	CLAW	ANGLE	FL	HP	YH	SC	MB	RE
2	2.6	76 30%	137 25%	28	17	0.28 2%	0.4 20%	1.19 4%	14.6 15%	0.4 65%	0.8	0.55	0.65

\$M	\$W	\$C	ANGUS ^{GS}	Act. BW	ADJ-205	ADJ-365	ADJ YEARLING SC
90 10%	73	264		84	851	1435	35.5



Topp Barbara 9761, Dam



Topp Barbara 5309, Maternal Granddam



TC Barbara 5016, 3rd Generation Dam

2



2 TOPP JIGSAW 5040
 DOB: 01/08/25 AAA: 21429808 Bull TATTOO: 5040

- #S A V Rainfall 6846
- Baldrige Jigsaw J523**
20047698
- Baldrige Isabel G336
- #Baldrige 38 Special
- Topp Ruby 1003**
20108168
- Topp Ruby 5307
- #Coleman Charlo 0256
- S A V Blackcap May 4136
- #Spring Cove Reno 4021
- Baldrige Isabel Y69
- #EF Commando 1366
- Baldrige Isabel Y69
- #Mohnen Wolf Creek 1871
- TA Ruby 3708

CED	BW	WW	YW	MILK	DOC	CLAW	ANGLE	FL	HP	YH	SC	MB	RE
10	-0.2	68	120	24	24	0.22	0.28	1.23	15.7	0.2	1.27	0.68	0.55
20%	20%				30%	7%	7%	7%	5%	85%	30%		

\$M	\$W	\$C	ANGUS GS	Act. BW	ADJ-205	ADJ-365	ADJ YEARLING SC
114	69	299		78	774	1355	37.75
1%		25%					

This bull may have as much natural width, rib shape, and muscle expression as any bull in the entire offering. He's bold sprung, wide based, and carries that extra look of power from the ground up.

5040 is a maternal brother to last year's high seller 4025 who sold to Tennessee River Music, proving this cow family can flat out generate herd bulls. He posts an impressive set of individual ratios: BR 95, WR 104, YR 105, combining calving ease with performance. His dam's flush mates include Topp Ruby 1017 who produced our 2024 high seller to Williamson Land & Cattle, Revolver and Caliber to Hamco Cattle Co. in Canada, and Topp 50 Cal 1006 to Currant Creek in Montana. Grandam, Topp Ruby 5307, also produced Topp Standout 1072 to Lone Oak Cattle in Iowa who is leaving us with the strongest set of females in our herd.

With the short gestation and consistency in low birthweight in this cow family, Lot 2 could be used on heifers as his epd's indicate, however, he will work to lower birthweight on cows and breed the structural and maternal strength to move a program forward.



Topp Ruby 5307, Granddam



Topp 50 Cal 1006, Dam's Flush Brother



Topp Prolific 4025, Maternal Brother



Topp Marcia 9044
Dam of Lot 3



3 TOPP JIGSAW 5154

DOB: 02/04/25 AAA: +21442073 Bull TATTOO: 5154

- #S A V Rainfall 6846
- Baldrige Jigsaw J523**
20047698
- Baldrige Isabel G336
- #SVA The Donald 4030
- Topp Marcia 9044**
19511321
- Topp Marcia 7012
- #Coleman Charlo 0256
- S A V Blackcap May 4136
- #Spring Cove Reno 4021
- Baldrige Isabel Y69
- #Sitz Investment 660Z
- #SVA Eileen 9051
- #Musgrave Big Sky
- TA Marcia 0616

CED	BW	WW	YW	MILK	DOC	CLAW	ANGLE	FL	HP	YH	SC	MB	RE
5	3.4	90 10%	162 4%	27	15	0.41 25%	0.45 %	1.13 20%	13.8 20%	0.7 35%	1.83 10%	0.7	0.63
\$M	\$W	\$C	ANGUS ^{GS}				Act. BW	ADJ-205	ADJ-365	ADJ YEARLING SC			
76 30%	81 20%	298 30%					83	702	1259	35.42			



Topp Flower 7927
Dam of Lot 4



4 TOPP JIGSAW 5049

DOB: 01/09/25 AAA: 21429924 Bull TATTOO: 5049

- #S A V Rainfall 6846
- Baldrige Jigsaw J523**
20047698
- Baldrige Isabel G336
- #SVA The Donald 4030
- Topp Flower 7927**
19158677
- Topp Flower 4305
- #Coleman Charlo 0256
- S A V Blackcap May 4136
- #Spring Cove Reno 4021
- Baldrige Isabel Y69
- #Sitz Investment 660Z
- #SVA Eileen 9051
- Sitz Icon 1054
- TC Flower 4019

CED	BW	WW	YW	MILK	DOC	CLAW	ANGLE	FL	HP	YH	SC	MB	RE
-1	4	87 10%	158 5%	25	29 10%	0.3 3%	0.32 3%	1.14 15%	12.7	0.5 55%	2.02 3%	0.47	0.96 25%
\$M	\$W	\$C	ANGUS ^{GS}				Act. BW	ADJ-205	ADJ-365	ADJ YEARLING SC			
85 15%	74	286					100	875	1464	39.59			



Baldridge Jigsaw J523



Topp Barbara 7873

What a great flush this was! Consistent maternal predictability.

Sired by Jigsaw and backed by the elite Barbara 7873 cow, these bulls come from a mating stacked with performance, muscle, and maternal integrity. They are stout, big middled, wide topped cattle that are designed to add pounds and substance to a calf crop.

The strength of this cow family speaks for itself. 7873 not only produced 2022 high seller Topp Mobile 0578 but is hitting it out of the park with the top end females from the fall herd. Mobile himself is carrying on the predictability just the same. He has seen tremendous use both in commercial operations and within our own herd producing females that are perfect uddered, moderate statured, and great mothering ability! When a bloodline is that consistent, it tells you everything you need to know about the predictability and functionality behind them. These bulls are no different and make sure to check out the flush sister selling as Lot 201!



Topp Mobile 0578,
Maternal Brother to Lots 5-8



T5 TOPP JIGSAW 5098
DOB: 01/14/25 AAA: +21429925 Bull TATTOO: 5098

- #S A V Rainfall 6846
- #Coleman Charlo 0256
- Baldridge Jigsaw J523**
- S A V Blackcap May 4136
- 20047698 Baldridge Isabel G336
- #Spring Cove Reno 4021
- #SVA The Donald 4030
- Baldrige Isabel Y69
- #Topp Barbara 7873**
- 19158667 #Topp Barbara 4323
- #Sitz Investment 660Z
- #SVA Eileen 9051
- Sitz Icon 1054
- TC Barbara 5016

CED	BW	WW	YW	MILK	DOC	CLAW	ANGLE	FL	HP	YH	SC	MB	RE
-3	3.5	93 4%	169 2%	30 25%	28 15%	0.32 4%	0.29 7%	1.08	11.2	0.7 35%	1.88 5%	0.63	0.61
\$M	\$W	\$C	ANGUS				Act. BW	ADJ-205	ADJ-365	ADJ YEARLING SC			
81 20%	89 10%	303 25%					92	770	1394	37.75			

Flush Brothers
LOTS 5 - 8





6

T 6

TOPP JIGSAW 5122

DOB: 01/18/25 AAA: +21429926 Bull TATTOO: 5122

CED	BW	WW	YW	MILK	DOC	CLAW	ANGLE	FL	HP	YH	SC	MB	RE
4	4	82 20%	155 10%	28	17	0.36 10%	0.27 1%	1.07	9.2	0.6 45%	0.93	0.81	0.95 25%
\$M	\$W	\$C	ANGUS _{GS}				Act. BW	ADJ-205	ADJ-365	ADJ YEARLING SC			
68	71	313 20%					92	794	1324	39.38			



7

T 7

TOPP JIGSAW 5128

DOB: 01/19/25 AAA: +21429927 Bull TATTOO: 5128

CED	BW	WW	YW	MILK	DOC	CLAW	ANGLE	FL	HP	YH	SC	MB	RE
5	0.4 30%	73	131	37 3%	25 25%	0.26 1%	0.36 10%	1.15 15%	12.3	0.3 75%	2.41 1%	0.9	0.27
\$M	\$W	\$C	ANGUS _{GS}				Act. BW	ADJ-205	ADJ-365	ADJ YEARLING SC			
102 3%	90 10%	289					77	713	1267	37.91			



8

T 8

TOPP JIGSAW 5131

DOB: 01/21/25 AAA: +21429928 Bull TATTOO: 5131

CED	BW	WW	YW	MILK	DOC	CLAW	ANGLE	FL	HP	YH	SC	MB	RE
5	2.1	77 30%	139 25%	33 15%	17	0.37 15%	0.45	1.22 2%	12.7	0.4 65%	1.31 25%	0.65	0.53
\$M	\$W	\$C	ANGUS _{GS}				Act. BW	ADJ-205	ADJ-365	ADJ YEARLING SC			
97 4%	84 15%	286					90	792	1285	36.98			





Topp Barbara 7810,
Maternal Granddam to Lot 9,
Maternal Sister to Lot 10



9 **TOPP JIGSAW 5075**
DOB: 01/12/25 AAA: 21429708 Bull TATTOO: 5075

#S A V Rainfall 6846
Baldrige Jigsaw J523
20047698 Baldrige Isabel G336
S A V Cattlemaster 4873
Topp Barbara 2006
20397955 Topp Barbara 7810

#Coleman Charlo 0256
S A V Blackcap May 4136
#Spring Cove Reno 4021
Baldrige Isabel Y69
#Connealy Consensus 7229
S A V Emblynette 7545
#HA Cowboy Up 5405
#Topp Barbara 5374

CED	BW	WW	YW	MILK	DOC	CLAW	ANGLE	FL	HP	YH	SC	MB	RE
10	-0.7	73	130	32	14	0.21	0.38	1.25	15.3	0.3	1.06	1.11	0.74
20%	15%			15%		1%	15%	1%	10%	75%		20%	

\$M	\$W	\$C	ANGUS ^{GS}	Act. BW	ADJ-205	ADJ-365	ADJ YEARLING SC
107	83	333			63	740	1204
2%	15%	10%					



Topp Barbara 5374,
Dam to Lot 10



10 **TOPP JIGSAW 5043**
DOB: 01/09/25 AAA: 21429936 Bull TATTOO: 5043

#S A V Rainfall 6846
Baldrige Jigsaw J523
20047698 Baldrige Isabel G336
TA 5016 Dash 3831
#Topp Barbara 5374
18435774 TA Barbara 3750

#Coleman Charlo 0256
S A V Blackcap May 4136
#Spring Cove Reno 4021
Baldrige Isabel Y69
SITZ Dash 11100
TC Barbara 5016
#Mohnen Wolf Creek 1871
TA Barbara 1304

CED	BW	WW	YW	MILK	DOC	CLAW	ANGLE	FL	HP	YH	SC	MB	RE
2	0.8	59	100	29	12	0.31	0.46	1.25	13.7	0	0.47	0.68	0.48
				30%		3%		1%	20%	95%			

\$M	\$W	\$C	ANGUS ^{GS}	Act. BW	ADJ-205	ADJ-365	ADJ YEARLING SC
105	68	283			83	723	1158
2%							





11 **TOPP JIGSAW 5118**
 DOB: 01/16/25 AAA: 21428137 Bull TATTOO: 5118

#S A V Rainfall 6846 #Coleman Charlo 0256
Baldrige Jigsaw J523 S A V Blackcap May 4136
 20047698 Baldrige Isabel G336 #Spring Cove Reno 4021
 Topp Certified 9796 Baldrige Isabel Y69
Topp Georgina 2098 #Baldrige 38 Special
 20375052 Topp Peggy 7864
 Topp Barron 6148
 #TA Georgina 3707

CED	BW	WW	YW	MILK	DOC	CLAW	ANGLE	FL	HP	YH	SC	MB	RE
9 30%	-1 10%	59	109	25	19	0.27 1%	0.26 1%	1.14 15%	13.8 20%	0.1 90%	0.81	0.29	0.53
\$M	\$W	\$C	ANGUS ^{GS}				Act. BW	ADJ-205	ADJ-365	ADJ YEARLING SC			
104 2%	63	249					67	739	1317	38.34			



Topp Emblynette 6077,
 Granddam to Lot 12

12 **TOPP JIGSAW 5115**
 DOB: 01/16/25 AAA: 21429710 Bull TATTOO: 5115

#S A V Rainfall 6846 #Coleman Charlo 0256
Baldrige Jigsaw J523 S A V Blackcap May 4136
 20047698 Baldrige Isabel G336 #Spring Cove Reno 4021
 Topp Huron 8350 Baldrige Isabel Y69
Topp Emblynette 2037 #Mohnen South Dakota 402
 20375026 Topp Emblynette 6077 #Topp Barbara 5309
 #S A V Priority 7283
 S A V Emblynette 0314

CED	BW	WW	YW	MILK	DOC	CLAW	ANGLE	FL	HP	YH	SC	MB	RE
1	2.8	80 20%	141 20%	21	25 25%	0.29 2%	0.43 30%	1.15 15%	15.9 4%	0.5 55%	0.99	1.15 20%	1.12 10%
\$M	\$W	\$C	ANGUS ^{GS}				Act. BW	ADJ-205	ADJ-365	ADJ YEARLING SC			
95 5%	69	351 10%					82	745	1271	37.34			

13



13 TOPP JIGSAW 5100
 DOB: 01/14/25 AAA: 21429807 Bull TATTOO: 5100

#S A V Rainfall 6846
Baldrige Jigsaw J523
 20047698 Baldrige Isabel G336

Topp Binford 8343
Topp Barbara 0480
 20127340 #Topp Barbara 7900

#Coleman Charlo 0256
 S A V Blackcap May 4136
 #Spring Cove Reno 4021
 Baldrige Isabel Y69
 #HA Cowboy Up 5405
 #TA Ruby 3753
 #SVA The Donald 4030
 Topp Barbara 1319

CED	BW	WW	YW	MILK	DOC	CLAW	ANGLE	FL	HP	YH	SC	MB	RE	
4	1.3	62	121	32 15%	29 10%	0.16 1%	0.43 30%	1.14 15%	13.4 25%	0.1 90%	2.05 3%	0.75	0.48	
\$M	\$W	\$C	ANGUS ^{GS}				Act. BW	ADJ-205	ADJ-365	ADJ YEARLING SC				
90 10%	65	287					84	765	1306	39.28				

15 TOPP JIGSAW 5069
 DOB: 01/11/25 AAA: 21429712 Bull TATTOO: 5069

#S A V Rainfall 6846
Baldrige Jigsaw J523
 20047698 Baldrige Isabel G336

Topp Lincoln 9789
Topp Ruby 1572
 20324942 TA 6530 Ruby 3721

#Coleman Charlo 0256
 S A V Blackcap May 4136
 #Spring Cove Reno 4021
 Baldrige Isabel Y69
 #S S Niagara Z29
 Topp Barbara 5011
 Sitz Icon 1054
 TC Ruby 6530

CED	BW	WW	YW	MILK	DOC	CLAW	ANGLE	FL	HP	YH	SC	MB	RE	
4	1.7	81 20%	154 10%	26	22	0.28 2%	0.42 25%	1.11 30%	12.5	0.5 55%	1.5 15%	0.68	0.69	
\$M	\$W	\$C	ANGUS ^{GS}				Act. BW	ADJ-205	ADJ-365	ADJ YEARLING SC				
69	72	271					81	776	1400	40.84				

14 TOPP JIGSAW 5067
 DOB: 01/11/25 AAA: 21429811 Bull TATTOO: 5067

#S A V Rainfall 6846
Baldrige Jigsaw J523
 20047698 Baldrige Isabel G336

TC Freal 625
Topp Pride 9812
 19737135 Topp Pride 7893

#Coleman Charlo 0256
 S A V Blackcap May 4136
 #Spring Cove Reno 4021
 Baldrige Isabel Y69
 #EF Authentic 0829
 TC Grmaker 4063
 #Musgrave Big Sky
 #TA Pride 2112

CED	BW	WW	YW	MILK	DOC	CLAW	ANGLE	FL	HP	YH	SC	MB	RE	
0	2.7	88 10%	158 15%	32 30%	24	0.44	0.47	1.07	12.9 25%	0.8 30%	1.21 30%	0.76	0.37	
\$M	\$W	\$C	ANGUS ^{GS}				Act. BW	ADJ-205	ADJ-365	ADJ YEARLING SC				
60 15%	86	253					91	846	1414	37.16				

16 TOPP JIGSAW 5093
 DOB: 01/14/25 AAA: 21429810 Bull TATTOO: 5093

#S A V Rainfall 6846
Baldrige Jigsaw J523
 20047698 Baldrige Isabel G336

Hamco Raptor 3F
Topp Ruby 1026
 20089553 #TA Ruby 3753

#Coleman Charlo 0256
 S A V Blackcap May 4136
 #Spring Cove Reno 4021
 Baldrige Isabel Y69
 #Quaker Hill Rampage 0A36
 Topp Peggy 6055
 SITZ Dash 11100
 TC Ruby 4076

CED	BW	WW	YW	MILK	DOC	CLAW	ANGLE	FL	HP	YH	SC	MB	RE	
0	4.8	89 10%	160 5%	26	19	0.44	0.46	1.01	13.4 25%	1.2 3%	1.17	0.66	0.5	
\$M	\$W	\$C	ANGUS ^{GS}				Act. BW	ADJ-205	ADJ-365	ADJ YEARLING SC				
35	68	217					96	795	1456	39.94				





Topp Blackbird 1091,
Dam to Lot 18

Topp Blackbird 6074,
Maternal Granddam to Lot 18

17 TOPP JIGSAW 5044

DOB: 01/09/25 AAA: 21429934 Bull TATTOO: 5044

#S A V Rainfall 6846
Baldrige Jigsaw J523
20047698 Baldrige Isabel G336

#SVA The Donald 4030
Topp Ruby 6112
18767821 #TA Ruby 3717

#Coleman Charlo 0256
S A V Blackcap May 4136
#Spring Cove Reno 4021
Baldrige Isabel Y69
#Sitz Investment 660Z
#SVA Eileen 9051
SITZ Dash 11100
TC Ruby 4076

CED	BW	WW	YW	MILK	DOC	CLAW	ANGLE	FL	HP	YH	SC	MB	RE
3	2.7	70	125	30 25%	21	0.37 15%	0.44	1.18 10%	16.4 3%	0.3 75%	0.92	0.53	0.56
\$M	\$W	\$C	ANGUS ^{GS}				Act. BW	ADJ-205	ADJ-365	ADJ YEARLING SC			
97 4%	70	282					87	782	1393	35.61			

18 TOPP JIGSAW 5106

DOB: 01/15/25 AAA: 21429809 Bull TATTOO: 5106

#S A V Rainfall 6846
Baldrige Jigsaw J523
20047698 Baldrige Isabel G336

Topp Binford 8343
Topp Blackbird 1091
20105440 Topp Blackbird 6074

#Coleman Charlo 0256
S A V Blackcap May 4136
#Spring Cove Reno 4021
Baldrige Isabel Y69
#HA Cowboy Up 5405
#TA Ruby 3753
#S A V Final Answer 0035
S A V Blackbird 5297

CED	BW	WW	YW	MILK	DOC	CLAW	ANGLE	FL	HP	YH	SC	MB	RE
5	1.7	73	131	24	21	0.27 1%	0.47	1.06	12.8	0 95%	1.76 10%	0.8	0.46
\$M	\$W	\$C	ANGUS ^{GS}				Act. BW	ADJ-205	ADJ-365	ADJ YEARLING SC			
70	68	252					79	797	1413	37.97			

19 TOPP JIGSAW 5096

DOB: 01/14/25 AAA: 21429848 Bull TATTOO: 5096

#S A V Rainfall 6846
Baldrige Jigsaw J523
20047698 Baldrige Isabel G336

Topp Barron 6148
Topp Barbara 9741
19737117 Topp Barbara 1319

#Coleman Charlo 0256
S A V Blackcap May 4136
#Spring Cove Reno 4021
Baldrige Isabel Y69
#SVA The Donald 4030
S A V Blackbird 5297
#Vin-Mar Focus In 8847
#TC Barbara 3088

CED	BW	WW	YW	MILK	DOC	CLAW	ANGLE	FL	HP	YH	SC	MB	RE
3	2.1	56	104	37 3%	16	0.35 10%	0.38 75%	1.13 20%	14.1 15%	0.8 25%	0.72	0.67	0.15
\$M	\$W	\$C	ANGUS ^{GS}				Act. BW	ADJ-205	ADJ-365	ADJ YEARLING SC			
88 15%	64	255					87	757	1176	37.75			

20 TOPP JIGSAW 5108

DOB: 01/15/25 AAA: 21429935 Bull TATTOO: 5108

#S A V Rainfall 6846
Baldrige Jigsaw J523
20047698 Baldrige Isabel G336

#Connealy Capitalist 028
Topp Barbara 6023
18581140 #TC Barbara 3088

#Coleman Charlo 0256
S A V Blackcap May 4136
#Spring Cove Reno 4021
Baldrige Isabel Y69
#S A V Final Answer 0035
Prides Pita of Conanga 8821
#TC Freedom 104
TC Barbara 356

CED	BW	WW	YW	MILK	DOC	CLAW	ANGLE	FL	HP	YH	SC	MB	RE
5	0.8	50	84	22	23	0.16 7%	0.3 2%	1.22 2%	13.1 30%	-0.1 95%	1.13	0.49	0.33
\$M	\$W	\$C	ANGUS ^{GS}				Act. BW	ADJ-205	ADJ-365	ADJ YEARLING SC			
98 4%	46	256					73	749	1133	35.8			

21



21 TOPP DOMAIN 5037
 DOB: 01/08/25 AAA: +21439888 Bull TATTOO: 5037

Woodhill Relevance
Woodhill Domain B56-J345
 20054370 Woodhill Evergreen Y121-B56

#SVA The Donald 4030
Topp Marcia 9044
 19511321 Topp Marcia 7012

#Connealy Confidence Plus
 Woodhill Blackbird X197-Z7
 #Plattemere Weigh Up K360
 Woodhill Evergreen T136-Y121
 #Sitz Investment 660Z
 #SVA Eileen 9051
 #Musgrave Big Sky
 TA Marcia 0616

Topp Domain 5037 is an extremely long bodied, level topped, high performing son of herd matriarch Topp Marcia 9044. His neck ties high and smoothly out of his shoulder at the ideal angle, giving him an attractive, herd bull presence without sacrificing genuine power.

We continue to use his sire Woodhill Domain B56-J345 for his ability to transmit great docility, level tops, square leg structure, and perfect udders. The full sisters to 5037 are exceptional females; broody, feminine, and built right. Check out 5037's full sister lot 202!

CED	BW	WW	YW	MILK	DOC	CLAW	ANGLE	FL	HP	YH	SC	MB	RE
6	1.9	92	148	27	29	0.45	0.42	1.13	11.3	0.4	1.01	0.7	0.9
		4%	15%		10%		25%	20%		65%			30%

\$M	\$W	\$C	ANGUS ^{GS}	Act. BW	ADJ-205	ADJ-365	ADJ YEARLING SC
109	101	307		76	779	1352	35.06
1%	2%	25%					



Topp Marcia 9044,
 Dam to Lot 21



22



22

TOPP DOMAIN 5015

DOB: 01/05/25 AAA: 21381509 Bull TATTOO: 5015

Woodhill Relevance
Woodhill Domain B56-J345
 20054370 Woodhill Evergreen Y121-B56

#Connealy Confidence Plus
 Woodhill Blackbird X197-Z7
 #Plattemere Weigh Up K360
 Woodhill Evergreen T136-Y121
 #Connealy Consensus 7229
 S A V Emblynette 7545
 #Mohnen Wolf Creek 1871
 TA Ruby 3708

S A V Cattlemaster 4873
Topp Ruby 3060
 20756574 Topp Ruby 5307

CED	BW	WW	YW	MILK	DOC	CLAW	ANGLE	FL	HP	YH	SC	MB	RE
10	1.4	84	143	22	35	0.41	0.28	1.16	12.3	0.7	1.38	0.37	1.04
20%		15%	20%		1%	25%	1%	10%		35%	20%		15%

SM	SW	SC	ANGUS ^{GS}	Act. BW	ADJ-205	ADJ-365	ADJ YEARLING SC
109	83	278		72	752	1323	40.49
1%	15%						



Topp Ruby 5307,
 Granddam to Lot 22

23

TOPP DOMAIN 5010

DOB: 01/04/25 AAA: 21381508 Bull TATTOO: 5010

Woodhill Relevance
Woodhill Domain B56-J345
 20054370 Woodhill Evergreen Y121-B56

#Connealy Confidence Plus
 Woodhill Blackbird X197-Z7
 #Plattemere Weigh Up K360
 Woodhill Evergreen T136-Y121
 #S S Niagara Z29
 Topp Ruby 5307
 #SVA The Donald 4030
 #TA Ruby 3728

Topp Standout 1072
Topp Ruby 3126
 20804792 Topp Ruby 7813

CED	BW	WW	YW	MILK	DOC	CLAW	ANGLE	FL	HP	YH	SC	MB	RE
5	0.8	78	140	28	29	0.46	0.43	1.12	9.3	0.7	0.69	0.4	0.91
		25%	20%		10%	30%	30%	25%		35%			30%

SM	SW	SC	ANGUS ^{GS}	Act. BW	ADJ-205	ADJ-365	ADJ YEARLING SC
63	78	267		73	775	1231	35.96
	25%						

24

TOPP DOMAIN 5031

DOB: 01/07/25 AAA: 21381511 Bull TATTOO: 5031

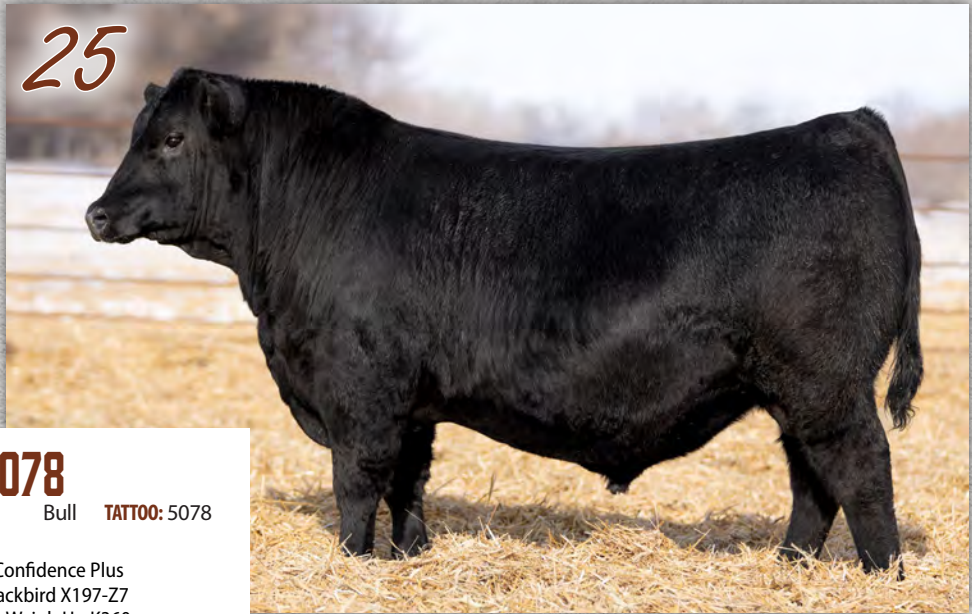
Woodhill Relevance
Woodhill Domain B56-J345
 20054370 Woodhill Evergreen Y121-B56

#Connealy Confidence Plus
 Woodhill Blackbird X197-Z7
 #Plattemere Weigh Up K360
 Woodhill Evergreen T136-Y121
 #Quaker Hill Rampage 0A36
 Topp Peggy 6055
 Belvin 3E Dillinger 6215
 MFA Lola 8D

Hamco Raptor 3F
Topp Lola 2020
 20917348 MFA Lola 99G

CED	BW	WW	YW	MILK	DOC	CLAW	ANGLE	FL	HP	YH	SC	MB	RE
9	-1.1	71	118	23	21	0.54	0.42	1.07	11.3	0.4	-0.06	0.74	1
30%	10%					25%				65%			20%

SM	SW	SC	ANGUS ^{GS}	Act. BW	ADJ-205	ADJ-365	ADJ YEARLING SC
86	75	271		70	680	1208	34.05
15%	30%						



T 25 TOPP DOMAIN 5078
 DOB: 01/12/25 AAA: 21381513 Bull TATTOO: 5078

Woodhill Relevance #Connealy Confidence Plus
Woodhill Domain B56-J345 Woodhill Blackbird X197-Z7
 20054370 Woodhill Evergreen Y121-B56 #Plattemere Weigh Up K360
 Woodhill Evergreen T136-Y121
 Topp Standout 1072 #S S Niagara Z29
Topp Ruby 3077 Topp Ruby 5307
 20749231 Topp Ruby 6112 #SVA The Donald 4030
 #TA Ruby 3717

CED	BW	WW	YW	MILK	DOC	CLAW	ANGLE	FL	HP	YH	SC	MB	RE	
-1	4.1	88 10%	159 5%	20	27 15%	0.43 30%	0.33 3%	1.05	12.1	0.7 35%	0.17	0.55	0.8	
\$M	\$W	\$C	ANGUS ^{GS}				Act. BW	ADJ-205	ADJ-365	ADJ YEARLING SC				
65	67	280					86	752	1443					



T 26 TOPP DOMAIN 5119
 DOB: 01/17/25 AAA: 21381517 Bull TATTOO: 5119

Woodhill Relevance #Connealy Confidence Plus
Woodhill Domain B56-J345 Woodhill Blackbird X197-Z7
 20054370 Woodhill Evergreen Y121-B56 #Plattemere Weigh Up K360
 Woodhill Evergreen T136-Y121
 S A V 707 Rito 1439 Rito 707 of Ideal 3407 7075
JL Pride Lass 5172 S A V Blackcap May 4136
 20182368 KBJ Pride Lass 318T #Boyd New Day 8005
 PAHL Pride Lass 110R

CED	BW	WW	YW	MILK	DOC	CLAW	ANGLE	FL	HP	YH	SC	MB	RE	
9 30%	0.1 25%	63	118	23	27 15%	0.42 25%	0.39 15%	1.17 10%	11.3	0.2 85%	0.78	0.46	0.78	
\$M	\$W	\$C	ANGUS ^{GS}				Act. BW	ADJ-205	ADJ-365	ADJ YEARLING SC				
93 10%	60	256					80	738	1226	34.95				



27



27 TOPP DOMAIN 5017

DOB: 01/05/25 AAA: 21428938 Bull TATTOO: 5017

Woodhill Relevance
Woodhill Domain B56-J345
 20054370 Woodhill Evergreen Y121-B56

Woodhill Relevance
Woodhill Domain B56-J345
 20054370 Woodhill Evergreen Y121-B56

Topp Presence 1052
Topp Barbara 3028
 20749222 Topp Barbara 8422

#Connealy Confidence Plus
 Woodhill Blackbird X197-Z7
 #Plattemere Weigh Up K360
 Woodhill Evergreen T136-Y121
 #S S Niagara Z29
 Topp Ruby 5346
 #SVA The Donald 4030
 Topp Barbara 5408

CED	BW	WW	YW	MILK	DOC	CLAW	ANGLE	FL	HP	YH	SC	MB	RE
4	2	87	155	25	27	0.4	0.4	1.04	11.8	0.7	0.76	0.11	0.88
		10%	10%		15%	20%	20%			35%			30%

\$M	\$W	\$C	Act. BW	ADJ-205	ADJ-365	ADJ YEARLING SC
78	83	253	79	790	1372	37.99
25%	15%					

ANGUS^{GS}

28 TOPP DOMAIN 5091

DOB: 01/13/25 AAA: 21381514 Bull TATTOO: 5091

Woodhill Relevance
Woodhill Domain B56-J345
 20054370 Woodhill Evergreen Y121-B56

Woodhill Relevance
Woodhill Domain B56-J345
 20054370 Woodhill Evergreen Y121-B56

Hamco Raptor 3F
Topp Barbara 3024
 20749218 Topp Barbara 0561

#Connealy Confidence Plus
 Woodhill Blackbird X197-Z7
 #Plattemere Weigh Up K360
 Woodhill Evergreen T136-Y121
 #Quaker Hill Rampage 0A36
 Topp Peggy 6055
 Topp Republic 8062
 Topp Barbara 7810

CED	BW	WW	YW	MILK	DOC	CLAW	ANGLE	FL	HP	YH	SC	MB	RE
-4	4.9	90	147	21	20	0.42	0.33	1.01	11	0.5	0.16	0.62	1.44
		10%	15%			25%	3%			55%			2%

\$M	\$W	\$C	Act. BW	ADJ-205	ADJ-365	ADJ YEARLING SC
75	77	275	85	754	1212	34.75
30%	25%					

ANGUS^{GS}

29 TOPP DOMAIN 5195

DOB: 02/25/25 AAA: 21436658 Bull TATTOO: 5195

Woodhill Relevance
Woodhill Domain B56-J345
 20054370 Woodhill Evergreen Y121-B56

Woodhill Relevance
Woodhill Domain B56-J345
 20054370 Woodhill Evergreen Y121-B56

Hamco Raptor 3F
Topp Ruby 1068
 20089548 Topp Ruby 6173

#Connealy Confidence Plus
 Woodhill Blackbird X197-Z7
 #Plattemere Weigh Up K360
 Woodhill Evergreen T136-Y121
 #Quaker Hill Rampage 0A36
 Topp Peggy 6055
 Circle A Mogul 3463
 #TA Ruby 3753

CED	BW	WW	YW	MILK	DOC	CLAW	ANGLE	FL	HP	YH	SC	MB	RE
7	0.5	81	134	23	23	0.41	0.21	1.12	12.4	0.4	0.3	0.54	0.81
		20%	30%			25%	7%	25%		65%			

\$M	\$W	\$C	Act. BW	ADJ-205	ADJ-365	ADJ YEARLING SC
107	86	286	82	729	1308	35.78
2%	15%					

ANGUS^{GS}



30 TOPP DOMAIN 5223

DOB: 04/05/25 AAA: 21381525 Bull TATTOO: 5223

Woodhill Relevance
Woodhill Domain B56-J345
 20054370 Woodhill Evergreen Y121-B56

#SVA The Donald 4030
Topp Ruby 9729
 19737041 #TA Ruby 3753

#Connealy Confidence Plus
 Woodhill Blackbird X197-Z7
 #Plattemere Weigh Up K360
 Woodhill Evergreen T136-Y121
 #Sitz Investment 660Z
 #SVA Eileen 9051
 SITZ Dash 11100
 TC Ruby 4076

CED	BW	WW	YW	MILK	DOC	CLAW	ANGLE	FL	HP	YH	SC	MB	RE
4	1.7	84 15%	149 15%	26	21	0.49	0.45	0.97	10.5	0.5 55%	1.05	0.99 30%	0.29
\$M	\$W	\$C	ANGUS ^{GS}				Act. BW	ADJ-205	ADJ-365	ADJ YEARLING SC			
70	84 15%	280					83	753	1334	37.34			



31 TOPP DOMAIN 5217

DOB: 03/25/25 AAA: 21381523 Bull TATTOO: 5217

Woodhill Relevance
Woodhill Domain B56-J345
 20054370 Woodhill Evergreen Y121-B56

TC Freal 625
Topp Emblynette 9088
 19511328 Topp Emblynette 6075

#Connealy Confidence Plus
 Woodhill Blackbird X197-Z7
 #Plattemere Weigh Up K360
 Woodhill Evergreen T136-Y121
 #EF Authentic 0829
 TC Grmaker 4063
 #S A V Priority 7283
 S A V Emblynette 0314

CED	BW	WW	YW	MILK	DOC	CLAW	ANGLE	FL	HP	YH	SC	MB	RE
7	-0.8 15%	72	129	21	24 30%	0.55	0.47	1.08	6.6	0.4 65%	0.45	0.44	0.79
\$M	\$W	\$C	ANGUS ^{GS}				Act. BW	ADJ-205	ADJ-365	ADJ YEARLING SC			
64	70	238					78	722	1175	34.99			

32 TOPP DOMAIN 5221

DOB: 03/28/25 AAA: 21381524 Bull TATTOO: 5221

Woodhill Relevance
Woodhill Domain B56-J345
 20054370 Woodhill Evergreen Y121-B56

Topp Huron 8350
Topp Emblynette 2027
 20375021 Topp Emblynette 6077

#Connealy Confidence Plus
 Woodhill Blackbird X197-Z7
 #Plattemere Weigh Up K360
 Woodhill Evergreen T136-Y121
 #Mohnen South Dakota 402
 #Topp Barbara 5309
 #S A V Priority 7283
 S A V Emblynette 0314

CED	BW	WW	YW	MILK	DOC	CLAW	ANGLE	FL	HP	YH	SC	MB	RE
8	-0.2 20%	65	110	23	12	0.47	0.4	1.11 30%	12.5	0.3 75%	0.27	0.5	0.82
\$M	\$W	\$C	ANGUS ^{GS}				Act. BW	ADJ-205	ADJ-365	ADJ YEARLING SC			
85 15%	66	252					76	694	1164	35.61			

33 TOPP DOMAIN 5224

DOB: 04/06/25 AAA: 21381526 Bull TATTOO: 5224

Woodhill Relevance
Woodhill Domain B56-J345
 20054370 Woodhill Evergreen Y121-B56

TC Freal 625
Topp Ruby 9836
 19737141 #TA Ruby 3717

#Connealy Confidence Plus
 Woodhill Blackbird X197-Z7
 #Plattemere Weigh Up K360
 Woodhill Evergreen T136-Y121
 #EF Authentic 0829
 TC Grmaker 4063
 SITZ Dash 11100
 TC Ruby 4076

CED	BW	WW	YW	MILK	DOC	CLAW	ANGLE	FL	HP	YH	SC	MB	RE
-2	1.4	76 30%	144 20%	19	26 20%	0.5	0.32 3%	1.12 25%	11.8	0.1 90%	0.89	0.77	0.62
\$M	\$W	\$C	ANGUS ^{GS}				Act. BW	ADJ-205	ADJ-365	ADJ YEARLING SC			
73	63	309 20%					88	731	1272	36.88			

34 TOPP DOMAIN 5225

DOB: 04/08/25 AAA: 21381527 Bull TATTOO: 5225

Woodhill Relevance
Woodhill Domain B56-J345
 20054370 Woodhill Evergreen Y121-B56

#S S Niagara Z29
Topp Blackbird 1075
 20108220 Topp Blackbird 6078

#Connealy Confidence Plus
 Woodhill Blackbird X197-Z7
 #Plattemere Weigh Up K360
 Woodhill Evergreen T136-Y121
 #Hoover Dam
 Jet S S X144
 #S A V Final Answer 0035
 S A V Blackbird 5297

CED	BW	WW	YW	MILK	DOC	CLAW	ANGLE	FL	HP	YH	SC	MB	RE
5	-0.1 25%	66	122	25	19	0.41 25%	0.32 3%	1.14 15%	11.7	0.7 35%	0.03	1.12 20%	0.97 20%
\$M	\$W	\$C	ANGUS ^{GS}				Act. BW	ADJ-205	ADJ-365	ADJ YEARLING SC			
67	60	298 30%					87	782	1300	36.63			



Topp Emblynette 9088,
Dam to Lot 31



Topp Emblynette 6077,
Granddam to Lot 32



Topp Ruby 9836,
Dam to Lot 33



Bar-E-L Natural Law 52Y

Coleman Eriskay 7305

An outcross to our program, lots 35 & 36 are the result of purchased embryos from the Crooked Creek donor pen and Coleman bred Coleman Eriskay 7305 and out of the great Canadian bred maternal legend Bar-E-L Natural Law 52Y. The maternal predictability in these two bulls is great and will leave you with a nice set of females in your replacement pen and calving pastures.



35 TOPP NATURAL LAW 5180
 DOB: 02/13/25 AAA: +21429893 Bull TATTOO: 5180

#S A V Bismarck 5682
Bar-E-L Natural Law 52Y
 19310190 Bar-E-L Magnolia 143K

#S A V Resource 1441
Coleman Eriskay 7305
 19107978 Coleman Eriskay 3331

#G A R Grid Maker
 S A V Abigale 0451
 Bar E L MCC 365 Icon 20H
 Double Four Duchess 12G
 Rito 707 of Ideal 3407 7075
 S A V Blackcap May 4136
 #Leachman Right Time
 #Sinclair Eriskay 2N1 7883

CED	BW	WW	YW	MILK	DOC	CLAW	ANGLE	FL	HP	YH	SC	MB	RE
3	2.7	66	105	25	13	0.42 25%	0.42 25%	1.19 4%	9.9	0.5 55%	0.52	0.46	0.71
\$M	\$W	\$C	ANGUS ^{GS}										
75 30%	63	225	Act. BW	ADJ-205	ADJ-365	ADJ YEARLING SC							
			90	774	1297	35.71							

36 TOPP NATURAL LAW 5164
 DOB: 02/08/25 AAA: +21429508 Bull TATTOO: 5164

CED	BW	WW	YW	MILK	DOC	CLAW	ANGLE	FL	HP	YH	SC	MB	RE
-1	4.4	69	122	27	16	0.42 25%	0.55	1.17 10%	9.8	0.8 25%	1.04	0.09	0.92 25%
\$M	\$W	\$C	ANGUS ^{GS}										
45	52	180	Act. BW	ADJ-205	ADJ-365	ADJ YEARLING SC							
			88	792	1269	35.05							

Flush Brothers
 LOTS 35 & 36

37



T37 TOPP SHOWMAN 5102
 DOB: 01/15/25 AAA: 21426991 Bull TATTOO: 5102

#Schiefelbein Attractive 4565 #JMB Traction 292
Schiefelbein Showman 338 Frosty Answer 3979
 19260249 Frosty Elba 3745 #S A V Renown 3439
 Frosty Upward 1100
 TC Freal 625 #EF Authentic 0829
Topp Ruby 9847 TC Grmaker 4063
 19737144 #Topp Ruby 7861 #HA Cowboy Up 5405
 Topp Ruby 5306

CED	BW	WW	YW	MILK	DOC	CLAW	ANGLE	FL	HP	YH	SC	MB	RE
11	-0.7	65	127	33	24	0.47	0.41	1.11	12.3	0.3	1.04	0.62	0.86
15%	15%			15%	30%		20%	30%		75%			

SM	SW	SC	ANGUS ^{GS}	Act. BW	ADJ-205	ADJ-365	ADJ YEARLING SC
72	71	252		87	855	1433	39.78

5102 is an extremely long-spined bull that puts it all together from the ground up. He gets out and moves like a cat with the kind of athleticism and flexibility you appreciate in a herd sire that's built to last. There's a real presence about this bull, the kind that commands attention when he steps into the pen.

But as good as he is phenotypically, the females behind him may be the most exciting part of the package. His maternal granddam posts impressive ratios of BR 6-107, WR 6-110, and YR 6-106, proving model consistency and productivity. His dam continues that tradition with ratios of BR 4-99, WR 4-106, and YR 4-105. Generations of proven performance stack up here, giving you confidence that 5102 isn't just a herd bull for today, he's one that will leave a lasting mark through his daughters.

Topp Ruby 9847,
 Dam of Lot 37



Topp Ruby 7861,
 Granddam of Lot 37



38



38 TOPP SHOWMAN 5038
 DOB: 01/08/25 AAA: 21429739 Bull TATTOO: 5038

#Schiefelbein Attractive 4565 #JMB Traction 292
Schiefelbein Showman 338 Frosty Answer 3979
 19260249 Frosty Elba 3745 #S A V Renown 3439
 Frosty Upward 1100
 SITZ Drive 625F Sitz Invasion 574D
Topp Marcia 0445 #SITZ Miss Burgess 304D
 20127338 Topp Marcia 6022 #Connealy Capitalist 028
 TA Marcia 0616

Here's a true calving ease option that still carries a little extra umph. He posts an impressive set of individual ratios — BR 89, WR 108, YR 111 — combining calving ease with strong performance through weaning and yearling.

Wide based and bold in his center body, he is especially impressive from hooks to pins. He sets down on a good, solid foot and tracks with confidence.

If you're looking for a bull that keeps birth in check while still adding width, substance, and growth, 5038 deserves serious consideration.

CED	BW	WW	YW	MILK	DOC	CLAW	ANGLE	FL	HP	YH	SC	MB	RE
10	-1.3	70	128	28	37	0.43	0.5	1.01	12.1	0.4	0.65	0.5	0.9
20%	10%				1%	30%				65%			30%

\$M	\$W	\$C	ANGUS ^{GS}	Act. BW	ADJ-205	ADJ-365	ADJ YEARLING SC
67	73	255		73	804	1436	37.09



Topp Marcia 0445, Dam to Lot 38



Topp Marcia 6022, Granddam to Lot 38



TA Marcia 0616, 3rd Generation Dam to Lot 38



Topp Barbara 5310,
Granddam to Lot 39



T 39 TOPP SHOWMAN 5085

DOB: 01/13/25 AAA: 21429736 Bull TATTOO: 5085

#Schiefelbein Attractive 4565

#JMB Traction 292

Schiefelbein Showman 338
19260249 Frosty Elba 3745

Frosty Answer 3979

#S A V Renown 3439

Frosty Upward 1100

S A V Cattlemaster 4873

#Connealy Consensus 7229

Topp Barbara 2012
20397992

#Topp Barbara 5310

S A V Emblynette 7545

#Connealy Capitalist 028

TC Barbara 5016

CED	BW	WW	YW	MILK	DOC	CLAW	ANGLE	FL	HP	YH	SC	MB	RE
13 10%	-0.7 15%	75	126	26	22	0.41 25%	0.35 5%	1.19 4%	13.7 20%	0.4 65%	1.21 30%	0.57	0.87 30%
\$M	\$W	\$C	ANGUS ^{GS}				Act. BW	ADJ-205	ADJ-365	ADJ YEARLING SC			
108 1%	83 15%	300 25%					73	728	1254	41.24			



Topp Barbara 2124,
Dam to Lot 40



T 40 TOPP SHOWMAN 5123

DOB: 01/18/25 AAA: 21429733 Bull TATTOO: 5123

#Schiefelbein Attractive 4565

#JMB Traction 292

Schiefelbein Showman 338
19260249 Frosty Elba 3745

Frosty Answer 3979

#S A V Renown 3439

Frosty Upward 1100

#S S Niagara Z29

#Hoover Dam

Topp Barbara 2124
20416668

WF Barbara 8011

Jet S S X144

#S A V International 2020

TC Barbara 5016

CED	BW	WW	YW	MILK	DOC	CLAW	ANGLE	FL	HP	YH	SC	MB	RE
4	0.7	81 20%	145 15%	31 20%	29 10%	0.36 10%	0.42 25%	1.21 3%	14.1 15%	0.7 35%	0.39	0.57	0.63
\$M	\$W	\$C	ANGUS ^{GS}				Act. BW	ADJ-205	ADJ-365	ADJ YEARLING SC			
105 2%	90 10%	294 30%					82	758	1387	35.4			





TOPP LINCOLN 1596
AAA. *20355350

*Topp Peggy 7837,
Dam of Topp Lincoln 1596*



Jemen Available!

TOPP MOBILE 0578
AAA. *20127288

CED	BW	WW	YW	DOC	HP	MILK	CW	MB	RE	\$M	\$C
+1	+3.9	+87	+158	+25	+9.3	+26	+74	+19	+70	+71	+253

*Topp Barbara 7873, Dam
of Topp Mobile 0578*



TOPP STANDOUT 1072
AAA. +*20131233

*Topp Ruby 5307, Dam
of Topp Standout 1072*



CED	BW	WW	YW	DOC	HP	MILK	CW	MB	RE	\$M	\$C
+15	-1.5	+67	+131	+27	+12.1	+38	+60	+46	+15	+103	+276

CED	BW	WW	YW	DOC	HP	MILK	CW	MB	RE	\$M	\$C
+9	-.2	+68	+131	+24	+10.3	+17	+63	+40	+71	+43	+235

TOPP

ANGUS

Visit ToppAngus.com For More Sale Details >>

PAUL TOPP, 701-650-8371
JESS CARLSON, 701-320-0726
HUDSON TOPP, 701-659-0360

8205 14th Street NE • Grace City, ND 58445

Email: toppangus@daketl.com

TOPPANGUS.COM





Topp Barbara 7810,
Maternal Granddam to Lot 41



41 TOPP STANDOUT 5004

DOB: 01/02/25 AAA: 21381505 Bull TATTOO: 5004

#S Niagara Z29 #Hoover Dam
Topp Standout 1072 Jet S S X144
 20131233 Topp Ruby 5307 #Mohnen Wolf Creek 1871
 TA Ruby 3708
 S AV Cattlemaster 4873 #Connealy Consensus 7229
Topp Barbara 3066 S AV Emblynette 7545
 20753328 Topp Barbara 7810 #HA Cowboy Up 5405
 #Topp Barbara 5374

CED	BW	WW	YW	MILK	DOC	CLAW	ANGLE	FL	HP	YH	SC	MB	RE
9 30%	0 25%	78 25%	133 30%	16	18	0.43 30%	0.4 20%	1.16 10%	12.3	0.3 75%	0.63	0.47	0.79
\$M	\$W	\$C	ANGUS ^{GS}				Act. BW	ADJ-205	ADJ-365	ADJ YEARLING SC			
77 30%	68	250					68	788	1351	37.39			



Topp Barbara 5309,
Maternal Granddam to Lot 42



42 TOPP STANDOUT 5006

DOB: 01/02/25 AAA: 21381506 Bull TATTOO: 5006

#S Niagara Z29 #Hoover Dam
Topp Standout 1072 Jet S S X144
 20131233 Topp Ruby 5307 #Mohnen Wolf Creek 1871
 TA Ruby 3708
 Topp Republic 8062 #SVA The Donald 4030
Topp Barbara 3127 TA Forever 3738
 20751373 #Topp Barbara 5309 #Connealy Capitalist 028
 TC Barbara 5016

CED	BW	WW	YW	MILK	DOC	CLAW	ANGLE	FL	HP	YH	SC	MB	RE
12 10%	-0.5 20%	63	111	21	26 20%	0.52	0.47	1.09	9.5	0.8 25%	1.1	0.19	0.83
\$M	\$W	\$C	ANGUS ^{GS}				Act. BW	ADJ-205	ADJ-365	ADJ YEARLING SC			
49	54	219					65	756	1249	38.89			





Topp Barbara 1160,
Granddam to Lot 43



43 TOPP STANDOUT 5007
DOB: 01/02/25 AAA: 21381507 Bull TATTOO: 5007

#S S Niagara Z29 #Hoover Dam
Topp Standout 1072 Jet S S X144
 20131233 Topp Ruby 5307 #Mohnen Wolf Creek 1871
 TA Ruby 3708
 SITZ Drive 625F Sitz Invasion 574D
Topp Barbara 3194 #SITZ Miss Burgess 304D
 20904068 Topp Barbara 1160 #S A V President 6847
 #TA Barbara 3725

CED	BW	WW	YW	MILK	DOC	CLAW	ANGLE	FL	HP	YH	SC	MB	RE
8	0.7	57	109	25	18	0.29 2%	0.39 75%	1.05	11.6	0.3 75%	-0.89	0.78	0.41

SM	\$W	\$C	ANGUS ^{GS}	Act. BW	ADJ-205	ADJ-365	ADJ YEARLING SC
73	57	246		74	717	1338	34.39



44 TOPP STANDOUT 5003
DOB: 01/01/25 AAA: 21381504 Bull TATTOO: 5003

#S S Niagara Z29 #Hoover Dam
Topp Standout 1072 Jet S S X144
 20131233 Topp Ruby 5307 #Mohnen Wolf Creek 1871
 TA Ruby 3708
 Basin Deposit 6249 #Basin Advance 3134
Topp Barbara 3124 Basin Lucy 4288
 20753353 Topp Barbara 0166 Topp Barron 6148
 Topp Barbara 5343

CED	BW	WW	YW	MILK	DOC	CLAW	ANGLE	FL	HP	YH	SC	MB	RE
9 30%	-0.6 15%	67	121	27	24 30%	0.46	0.42 25%	1.1	11	0.6 45%	0.61	0.63	0.75

SM	\$W	\$C	ANGUS ^{GS}	Act. BW	ADJ-205	ADJ-365	ADJ YEARLING SC
55	64	234		68	776	1283	36.36

T45 TOPP STANDOUT 5019

DOB: 01/05/25 AAA: 21381510 Bull TATTOO: 5019

#S S Niagara Z29 #Hoover Dam
Topp Standout 1072 Jet S S X144
 20131233 Topp Ruby 5307 #Mohnen Wolf Creek 1871
 Topp Binford 8343 TA Ruby 3708
Topp Flower 3144 #HA Cowboy Up 5405
 20749251 Topp Flower 9744 #TA Ruby 3753
 Topp Barron 6148
 Topp Flower 4234

CED	BW	WW	YW	MILK	DOC	CLAW	ANGLE	FL	HP	YH	SC	MB	RE	
1	3.5	75	142	20	25	0.57	0.53	1.15	11.6	0.9	0.58	0.3	0.8	
			20%		25%			15%		15%				
\$M	\$W	\$C	ANGUS ^{GS}				Act. BW	ADJ-205	ADJ-365	ADJ YEARLING SC				
50	50	258					64	689	1235	33.49				



T46 TOPP STANDOUT 5097

DOB: 01/14/25 AAA: 21381515 Bull TATTOO: 5097

#S S Niagara Z29 #Hoover Dam
Topp Standout 1072 Jet S S X144
 20131233 Topp Ruby 5307 #Mohnen Wolf Creek 1871
 Topp Binford 8343 TA Ruby 3708
Topp Barbara 9743 #Hoover Dam
 19737118 #Topp Barbara 6142 Jet S S X144
 Topp Hancock 2154
 Topp Barbara 4323

CED	BW	WW	YW	MILK	DOC	CLAW	ANGLE	FL	HP	YH	SC	MB	RE	
-6	4.1	83	156	28	21	0.56	0.54	1.07	14.2	1.4	1.65	0.52	0.53	
			15%	10%					15%	1%	10%			
\$M	\$W	\$C	ANGUS ^{GS}				Act. BW	ADJ-205	ADJ-365	ADJ YEARLING SC				
35	64	255					91	851	1435	40.75				
%	%	%												



T47 TOPP STANDOUT 5099

DOB: 01/14/25 AAA: 21381516 Bull TATTOO: 5099

#S S Niagara Z29 #Hoover Dam
Topp Standout 1072 Jet S S X144
 20131233 Topp Ruby 5307 #Mohnen Wolf Creek 1871
 Woodhill Domain B56-J345 Woodhill Relevance
Topp Ruby 3092 Woodhill Evergreen Y121-B56
 20749235 Topp Ruby 1044 Hamco Raptor 3F
 #TA Ruby 3753

CED	BW	WW	YW	MILK	DOC	CLAW	ANGLE	FL	HP	YH	SC	MB	RE	
-2	4.6	72	138	24	21	0.54	0.46	1.05	9.4	0.9	-0.44	0.52	1.07	
			25%							15%			15%	
\$M	\$W	\$C	ANGUS ^{GS}				Act. BW	ADJ-205	ADJ-365	ADJ YEARLING SC				
37	49	257					89	763	1376	33.78				





MFA Princess 23D,
Dam to Lot 48



48

48 TOPP STANDOUT 5114

DOB: 01/16/25 AAA: 21439542 Bull TATTOO: 5114

#S Niagara Z29
Topp Standout 1072
20131233 Topp Ruby 5307

MVF Pioneer 39A
MFA Princess 23D
20173943 MFA Princess 113B

#Hoover Dam
Jet S S X144
#Mohnen Wolf Creek 1871
TA Ruby 3708
MVF Pioneer 95X
MVF Ellen 6Y
MFA High Prime 51Z
MFA Princess 33Y

CED	BW	WW	YW	MILK	DOC	CLAW	ANGLE	FL	HP	YH	SC	MB	RE
12	-0.5	71	124	10	22	0.55	0.43	1.07	8.8	0.4	0.46	0.69	0.74
10%	20%						30%			65%			

\$M	\$W	\$C	ANGUS ^{GS}	Act. BW	ADJ-205	ADJ-365	ADJ YEARLING SC
32	46	236		77	762	1237	37.83

49 TOPP STANDOUT 5013

DOB: 01/04/25 AAA: 21381555 Bull TATTOO: 5013

#S Niagara Z29
Topp Standout 1072
20131233 Topp Ruby 5307

Basin Deposit 6249
Topp Ruby 3018
20753356 Topp Ruby 8034

#Hoover Dam
Jet S S X144
#Mohnen Wolf Creek 1871
TA Ruby 3708
#Basin Advance 3134
Basin Lucy 4288
#Musgrave Big Sky
TC Ruby 6530

CED	BW	WW	YW	MILK	DOC	CLAW	ANGLE	FL	HP	YH	SC	MB	RE
8	0.9	67	121	16	19	0.36	0.37	1.09	12	0.7	0.86	0.71	0.13
						10%	10%			35%			

\$M	\$W	\$C	ANGUS ^{GS}	Act. BW	ADJ-205	ADJ-365	ADJ YEARLING SC
62	49	222		78	765	1235	34.46



50

50 TOPP STANDOUT 5117

DOB: 01/16/25 AAA: 21439541 Bull TATTOO: 5117

#S Niagara Z29
Topp Standout 1072
20131233 Topp Ruby 5307

JL Accelerator 3076
Midnite Oil Grace 16D
20185677 Midnite Oil Grace 7W

#Hoover Dam
Jet S S X144
#Mohnen Wolf Creek 1871
TA Ruby 3708
S A V Eliminator 9105
Duchess of Peak Dot 724P
MVF Alliance 670N
Young Dale Grace 17L

CED	BW	WW	YW	MILK	DOC	CLAW	ANGLE	FL	HP	YH	SC	MB	RE
2	2.7	76	140	13	25	0.58	0.51	1.16	9.6	0.7	0.31	0.7	0.1
		30%	20%		25%			10%		35%			

\$M	\$W	\$C	ANGUS ^{GS}	Act. BW	ADJ-205	ADJ-365	ADJ YEARLING SC
50	50	241		79	744	1254	34.83



Ellingson Prolific



Topp Barbara 7810

Lots 51 – 54 are a real nice set of flush brothers from the never miss cow Topp Barbara 7810. Moderate in their design, these brothers carry the absolute structural integrity of their dam with freedom of movement and extra length of body. We have utilized 7810 in our embryo program extensively for her ability to transmit her udder quality, efficiency, and overall soundness into her daughters. We have 20 daughters retained so far in our herd and they are surpassing all expectations in terms of production. This set of flush brothers will produce for you a great set of replacement females and a heavy consistent set of steers.



51 TOPP PROLIFIC 5045
 DOB: 01/09/25 AAA: +21430030 Bull TATTOO: 5045

Ellingson Profound 8155 #S Powerpoint WS 5503
Ellingson Prolific #EA Rosetta 6157
 20136857 #EA Queen 8070 #Koupal Juneau 797
 #HA Cowboy Up 5405 EA Queen 2350
Topp Barbara 7810 HA Outside 3008
 19165152 #Topp Barbara 5374 #HA Blackcap Lady 1602
 TA 5016 Dash 3831
 TA Barbara 3750

CED	BW	WW	YW	MILK	DOC	CLAW	ANGLE	FL	HP	YH	SC	MB	RE
9	0.4	87	142	20	19	0.29	0.25	1.08	11.2	0.7	0.83	0.34	0.63
30%	30%	10%	20%			2%	1%			35%			

\$M	\$W	\$C	ANGUS ^{GS}	Act. BW	ADJ-205	ADJ-365	ADJ YEARLING SC
94	86	278		81	761	1222	36.59
10%	15%						

Flush Brothers
 LOTS 51 - 54

52



52 TOPP PROLIFIC 5092
 DOB: 01/13/25 AAA: +21430027 Bull TATTOO: 5092

Ellingson Profound 8155 #S Powerpoint WS 5503
 #EA Rosetta 6157
Ellingson Prolific #Koupal Juneau 797
 20136857 #EA Queen 8070
 #HA Cowboy Up 5405
Topp Barbara 7810 HA Outside 3008
 19165152 #Topp Barbara 5374
 #HA Blackcap Lady 1602
 TA 5016 Dash 3831
 TA Barbara 3750

CED	BW	WW	YW	MILK	DOC	CLAW	ANGLE	FL	HP	YH	SC	MB	RE
1	2.4	97 2%	159 5%	20	16	0.41 25%	0.34 4%	1.07	10.8	0.8 25%	1.02	0.6	0.65
\$M	\$W	\$C	ANGUS ^{GS}				Act. BW	ADJ-205	ADJ-365	ADJ YEARLING SC			
71	90 10%	260	ANGUS ^{GS}				92	737	1268	36.22			

53 TOPP PROLIFIC 5059
 DOB: 01/09/25 AAA: +21430026 Bull TATTOO: 5059

CED	BW	WW	YW	MILK	DOC	CLAW	ANGLE	FL	HP	YH	SC	MB	RE
3	2.7	96 2%	158 5%	22	18	0.3 3%	0.32 3%	1.11 30%	13.4 25%	0.7 35%	0.38	0.65	0.69
\$M	\$W	\$C	ANGUS ^{GS}				Act. BW	ADJ-205	ADJ-365	ADJ YEARLING SC			
99 4%	91 10%	304 25%	ANGUS ^{GS}				65	812	1193	35.59			

54 TOPP PROLIFIC 5104
 DOB: 01/15/25 AAA: +21430028 Bull TATTOO: 5104

CED	BW	WW	YW	MILK	DOC	CLAW	ANGLE	FL	HP	YH	SC	MB	RE
2	2.1	94 3%	160 5%	16	5	0.33 5%	0.3 2%	1.06	11.7	0.8 25%	0.56	0.51	0.37
\$M	\$W	\$C	ANGUS ^{GS}				Act. BW	ADJ-205	ADJ-365	ADJ YEARLING SC			
68	80 20%	251	ANGUS ^{GS}				83	785	1241	29.78			

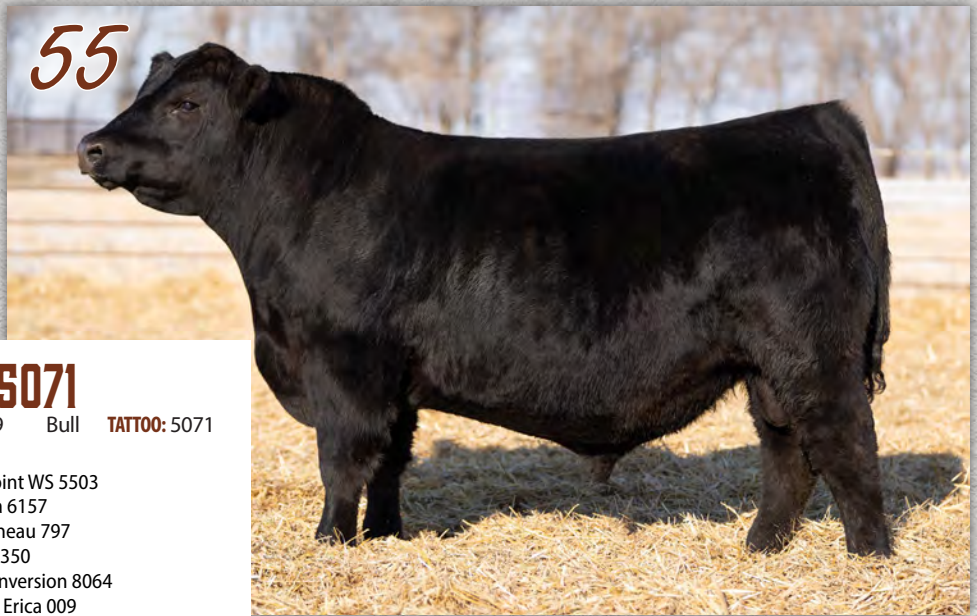
DVAuction
 Broadcasting Real-Time Auctions

Visit www.DVAuction.com
 and Register Today!

For General Questions Please Contact Our Office:
 (402) 316-5460 or support@dvauction.com



JACS Fortune 9720,
Dam to Lot 55



55 **TOPP PROLIFIC 5071**
DOB: 01/11/25 AAA: 21429999 Bull TATTOO: 5071

Ellingson Profound 8155 #S Powerpoint WS 5503
Ellingson Prolific #EA Rosetta 6157
 20136857 #EA Queen 8070 #Koupal Juneau 797
 EA Queen 2350
 #BUBS Southern Charm AA31 Silveiras Conversion 8064
JACS Fortune 9720 Hickory Hill Erica 009
 19769437 Mogck Fortune 170 #MOGCK Sure Shot
 Mogck Fortune 1588

CED	BW	WW	YW	MILK	DOC	CLAW	ANGLE	FL	HP	YH	SC	MB	RE
6	2.1	79 25%	141 20%	26	25	0.35 10%	0.27 1%	1.1	14.6 15%	0.5 55%	1.19 30%	0.67	1.18 10%
\$M	\$W	\$C	ANGUS ^{GS}				Act. BW	ADJ-205	ADJ-365	ADJ YEARLING SC			
106 2%	79 25%	352 10%					88	754	1325	36.66			

56 **TOPP PROLIFIC 5050**
DOB: 01/09/25 AAA: 21429997 Bull TATTOO: 5050

Ellingson Profound 8155 #S Powerpoint WS 5503
Ellingson Prolific #EA Rosetta 6157
 20136857 #EA Queen 8070 #Koupal Juneau 797
 EA Queen 2350
 TC Freal 625 #EF Authentic 0829
#Topp Emlynnette 0132 TC Grmaker 4063
 19823737 Topp Emlynnette 6077 #S A V Priority 7283
 S A V Emlynnette 0314

CED	BW	WW	YW	MILK	DOC	CLAW	ANGLE	FL	HP	YH	SC	MB	RE
-6	4.2	77 30%	133 30%	23	18	0.36 10%	0.27 1%	1.08	12.3	0.7 35%	0.72	0.55	0.76
\$M	\$W	\$C	ANGUS ^{GS}				Act. BW	ADJ-205	ADJ-365	ADJ YEARLING SC			
76 30%	65	287					97	767	1266	37.12			

57 **TOPP PROLIFIC 5054**
DOB: 01/09/25 AAA: 21430025 Bull TATTOO: 5054

Ellingson Profound 8155 #S Powerpoint WS 5503
Ellingson Prolific #EA Rosetta 6157
 20136857 #EA Queen 8070 #Koupal Juneau 797
 EA Queen 2350
 #HA Cowboy Up 5405 HA Outside 3008
#Topp Marcia 7834 #HA Blackcap Lady 1602
 19165189 TA Marcia 0616 #Vin-Mar Focus In 8847
 TC Marcia 6170

CED	BW	WW	YW	MILK	DOC	CLAW	ANGLE	FL	HP	YH	SC	MB	RE
3	4.2	87 10%	144 20%	15	9	0.29 2%	0.27 1%	1.15 15%	13.9 20%	0.6 45%	1.16	0.37	0.42
\$M	\$W	\$C	ANGUS ^{GS}				Act. BW	ADJ-205	ADJ-365	ADJ YEARLING SC			
80 25%	64	255					97	762	1304	39.59			

58 **TOPP PROLIFIC 5056**
DOB: 01/09/25 AAA: 21429998 Bull TATTOO: 5056

Ellingson Profound 8155 #S Powerpoint WS 5503
Ellingson Prolific #EA Rosetta 6157
 20136857 #EA Queen 8070 #Koupal Juneau 797
 EA Queen 2350
 SITZ Drive 625F Sitz Invasion 574D
#Topp Eileen 0106 #SITZ Miss Burgess 304D
 19823718 Topp Eileen 6213 #Mohnen Wolf Creek 1871
 #SVA Eileen 9051

CED	BW	WW	YW	MILK	DOC	CLAW	ANGLE	FL	HP	YH	SC	MB	RE	
0	2.8	80 20%	136 25%	30	11	0.26 1%	0.28 1%	1.12 25%	15.3 10%	1	10%	0.04	0.22	0.25
\$M	\$W	\$C	ANGUS ^{GS}				Act. BW	ADJ-205	ADJ-365	ADJ YEARLING SC				
100 3%	84 15%	263					90	822	1342	32.62				



Topp Emlynnette 0132,
Dam to Lot 56



T59 TOPP PROLIFIC 5068

DOB: 01/11/25 AAA: 21430005 Bull TATTOO: 5068

Ellingson Profound 8155 #S Powerpoint WS 5503
 Ellingson Prolific #EA Rosetta 6157
 20136857 #EA Queen 8070
 #Koupal Juneau 797
 #Baldridge 38 Special EA Queen 2350
 #EF Commando 1366
Topp Donna 9840 Baldridge Isabel Y69
 19737142 Topp Donna 7838 #Mohnen Wolf Creek 1871
 Coleman Donna 0176

CED	BW	WW	YW	MILK	DOC	CLAW	ANGLE	FL	HP	YH	SC	MB	RE
6	3.2	92 4%	152 10%	26	20	0.27 1%	0.35 5%	1.09	15.1 10%	1.1 10%	0.8	0.32	0.74
\$M	\$W	\$C	ANGUS ^{GS}				Act. BW	ADJ-205	ADJ-365	ADJ YEARLING SC			
97 4%	89 10%	311 20%					95	903	1487	42.66			



Topp Barbara 5309,
Dam to Lot 61



Topp Barbara 5310,
Granddam to Lot 60

T60 TOPP PROLIFIC 5125

DOB: 01/18/25 AAA: 21429819 Bull TATTOO: 5125

Ellingson Profound 8155 #S Powerpoint WS 5503
 Ellingson Prolific #EA Rosetta 6157
 20136857 #EA Queen 8070
 #Koupal Juneau 797
 #Connealy Consensus 7229
 S A V Cattlemaster 4873 #Connealy Capitalist 028
Topp Barbara 2066 S A V Emblynette 7545
 20397987 #Topp Barbara 5310 #Connealy Capitalist 028
 TC Barbara 5016

CED	BW	WW	YW	MILK	DOC	CLAW	ANGLE	FL	HP	YH	SC	MB	RE
0	4	88 10%	145 15%	21	15	0.38 15%	0.21 7%	1.06	14.5 15%	0.8 25%	0.57	0.87	0.81
\$M	\$W	\$C	ANGUS ^{GS}				Act. BW	ADJ-205	ADJ-365	ADJ YEARLING SC			
86 15%	75 30%	308 20%					81	773	1333	34.9			

T61 TOPP PROLIFIC 5079

DOB: 01/12/25 AAA: 21470146 Bull TATTOO: 5079

Ellingson Profound 8155 #S Powerpoint WS 5503
 Ellingson Prolific #EA Rosetta 6157
 20136857 #EA Queen 8070
 #Koupal Juneau 797
 #Connealy Capitalist 028 #S A V Final Answer 0035
#Topp Barbara 5309 Prides Pita of Conanga 8821
 18438163 TC Barbara 5016 #B C C Bushwacker 41-93
 #TC Barbara 3088

CED	BW	WW	YW	MILK	DOC	CLAW	ANGLE	FL	HP	YH	SC	MB	RE
-10 20%	1.2	73	121	28	16	0.21 7%	0.23 7%	1.14 15%	15.6 5%	0.4 65%	0.43	0.31	0.73
\$M	\$W	\$C	ANGUS ^{GS}				Act. BW	ADJ-205	ADJ-365	ADJ YEARLING SC			
124 1%	83 15%	286					85	796	1297	35.79			

T62 TOPP PROLIFIC 5088

DOB: 01/13/25 AAA: 21429996 Bull TATTOO: 5088

Ellingson Profound 8155 #S Powerpoint WS 5503
 Ellingson Prolific #EA Rosetta 6157
 20136857 #EA Queen 8070
 #Koupal Juneau 797
 #EF Authentic 0829
 TC Freal 625 TC Grmaker 4063
Topp Emblynette 0145 #S A V Priority 7283
 19823738 Topp Emblynette 6077 S A V Emblynette 0314

CED	BW	WW	YW	MILK	DOC	CLAW	ANGLE	FL	HP	YH	SC	MB	RE
-3	3.3	72	130	22	14	0.36 10%	0.41 20%	1.23 1%	12.9 30%	0.8 25%	0.21	0.63	0.79
\$M	\$W	\$C	ANGUS ^{GS}				Act. BW	ADJ-205	ADJ-365	ADJ YEARLING SC			
73	55	273					89	766	1267	36.75			

T63 TOPP PROLIFIC 5095

DOB: 01/14/25 AAA: 21429862 Bull TATTOO: 5095

Ellingson Profound 8155 #S Powerpoint WS 5503
 Ellingson Prolific #EA Rosetta 6157
 20136857 #EA Queen 8070
 #Koupal Juneau 797
 #Connealy Thunder
 MFA Thunder 2C MFA Rosebud 108A
MFA Queen Mother 109E #HIGH PRIME 4037
 20182453 MFA Queen Mother 41Z MFA Queen Mother 174U

CED	BW	WW	YW	MILK	DOC	CLAW	ANGLE	FL	HP	YH	SC	MB	RE
3	2.5	76 30%	133 30%	24	18	0.26 7%	0.32 3%	1.05	12.4	0.7 35%	1.1	0.44	0.56
\$M	\$W	\$C	ANGUS ^{GS}				Act. BW	ADJ-205	ADJ-365	ADJ YEARLING SC			
80 25%	69	273					93	761	1295	35.75			

64



T64 TOPP BIG VALLEY 5198
 DOB: 03/02/25 AAA: 21436659 Bull TATTOO: 5198

#Connealy Big Valley #Connealy Dry Valley
GA Big Valley 1062 #Bunty Lay of Conanga 4930
 20380299 DL Princess 125 #DL Final Grandview 53
 Topp Binford 8343 #HA Cowboy Up 5405
Topp Barbara 0485 #TA Ruby 3753
 20127363 Topp Barbara 4210 #Mohnen Wolf Creek 1871
 TA Barbara 1323

CED	BW	WW	YW	MILK	DOC	CLAW	ANGLE	FL	HP	YH	SC	MB	RE
-2	3.5	70	120	22	22	0.47	0.39 15%	1.16 10%	11.8	0.2 85%	1.32 25%	0.37	0.97 20%
\$M	\$W	\$C	ANGUS ^{GS}				Act. BW	ADJ-205	ADJ-365	ADJ YEARLING SC			
84 75%	60	257					92	835	1358	41.29			



Topp Barbara 7821, Granddam to Lot 65

T65 TOPP BIG VALLEY 5192
 DOB: 02/22/25 AAA: 21436657 Bull TATTOO: 5192

#Connealy Big Valley #Connealy Dry Valley
GA Big Valley 1062 #Bunty Lay of Conanga 4930
 20380299 DL Princess 125 #DL Final Grandview 53
 Topp Binford 8343 #HA Cowboy Up 5405
Topp Barbara 2032 #TA Ruby 3753
 20375022 Topp Barbara 7821 Circle A Mogul 3463
 #Topp Barbara 5310

CED	BW	WW	YW	MILK	DOC	CLAW	ANGLE	FL	HP	YH	SC	MB	RE
-1	4	76 30%	125	27	23	0.44	0.41 20%	1.13 20%	13 30%	0.2 85%	1.09	0.49	1.15 10%
\$M	\$W	\$C	ANGUS ^{GS}				Act. BW	ADJ-205	ADJ-365	ADJ YEARLING SC			
93 10%	74	272					86	677	1290	38.52			



66



66

TOPP DRIVE 5151

DOB: 02/04/25 AAA: 21436651 Bull TATTOO: 5151

Sitz Invasion 574D
SITZ Drive 625F
 19102562 #SITZ Miss Burgess 304D

#S A V Renown 3439
Topp Pride 0174
 19823743 #TA Pride 3752

#Connealy Conquest
 #Sitz Supermama 173Z
 Sitz Game Day 748a
 SITZ Miss Burgess 138Y
 Rito 707 of Ideal 3407 7075
 S A V Blackcap May 4136
 #Mohnen Wolf Creek 1871
 TA Pride 1327

5151 is likely the most massive son of Drive we have raised to date.

He is backed by an incredible daughter of Renown who is ratiing BR100, WR 106, YR 105 adding another layer of proven maternal strength and production to the pedigree. The cow power behind this bull is undeniable, and it shows in his mass, depth, and overall dimension.

We used Drive for 6 years because of his ability to provide us with excellent calving ease and model angus cows with great mothering ability, structural soundness, and ideal udder quality. His son Topp Mobile 0578 is breeding the same ensuring the influence from Drive for the foreseeable future.

CED	BW	WW	YW	MILK	DOC	CLAW	ANGLE	FL	HP	YH	SC	MB	RE
14 4%	-0.3 20%	68	121	29 30%	23	0.45	0.5	1.12 25%	11.7	0.5 55%	1	0.3	0.53
\$M	\$W	\$C	ANGUS ^{GS}				Act. BW	ADJ-205	ADJ-365	ADJ-YEARLING SC			
69	72 %	216					91	754	1408	37.95			



Topp Barbara 0123



Topp Marcia 0445



Topp Mobile 0578

Paternal Siblings TO LOT 66

67



Topp Barbara 5310, Granddam to Lot 67

67 TOPP DRIVE 5153
 DOB: 02/04/25 AAA: 21436650 Bull TATTOO: 5153

Sitz Invasion 574D #Connealy Conquest
SITZ Drive 625F #Sitz Supermama 173Z
 19102562 #SITZ Miss Burgess 304D Sitz Game Day 748a
 S A V Cattlemaster 4873 SITZ Miss Burgess 138Y
Topp Barbara 2050 #Connealy Consensus 7229
 20397979 #Topp Barbara 5310 S A V Emblynette 7545
 #Connealy Capitalist 028
 TC Barbara 5016

CED	BW	WW	YW	MILK	DOC	CLAW	ANGLE	FL	HP	YH	SC	MB	RE
17	-2.5	67	118	27	11	0.53	0.49	1.19	11.8	0.6	0.64	0.58	0.77
17	1%	2%						4%		45%			

\$M	\$W	\$C	Act. BW	ADJ-205	ADJ-365	ADJ YEARLING SC
91	78	262	67	738	1221	34.95
10%	25%					

68 TOPP DRIVE 5178
 DOB: 02/12/25 AAA: 21436653 Bull TATTOO: 5178

Sitz Invasion 574D #Connealy Conquest
SITZ Drive 625F #Sitz Supermama 173Z
 19102562 #SITZ Miss Burgess 304D Sitz Game Day 748a
 Topp Huron 8350 SITZ Miss Burgess 138Y
Topp Marcia 2132 #Mohnen South Dakota 402
 20375070 Topp Marcia 7039 #Topp Barbara 5309
 #Musgrave Big Sky
 #TA Marcia 0620

CED	BW	WW	YW	MILK	DOC	CLAW	ANGLE	FL	HP	YH	SC	MB	RE
13	-0.6	68	125	33	15	0.35	0.48	1.15	13.4	0.4	0.47	0.36	0.57
13	10%	15%		15%		10%		15%	25%	65%			

\$M	\$W	\$C	Act. BW	ADJ-205	ADJ-365	ADJ YEARLING SC
83	78	233	68	711	1271	35.2
20%	25%					

69 TOPP DRIVE 5182
 DOB: 02/13/25 AAA: 21436654 Bull TATTOO: 5182

Sitz Invasion 574D #Connealy Conquest
SITZ Drive 625F #Sitz Supermama 173Z
 19102562 #SITZ Miss Burgess 304D Sitz Game Day 748a
 S A V Cattlemaster 4873 SITZ Miss Burgess 138Y
Topp Ruby 2034 #Connealy Consensus 7229
 20397964 Topp Ruby 7028 S A V Emblynette 7545
 #Basin Payweight 1075
 TC Ruby 6530

CED	BW	WW	YW	MILK	DOC	CLAW	ANGLE	FL	HP	YH	SC	MB	RE
12	-1.4	53	100	34	19	0.45	0.54	1.19	13.5	0.4	1.55	0.79	0.5
12	10%	10%		10%				4%	25%	65%	15%		

\$M	\$W	\$C	Act. BW	ADJ-205	ADJ-365	ADJ YEARLING SC
85	64	273	71	673	1185	34.24
15%						





70 TOPP DRIVE 518S

DOB: 02/17/25 AAA: 21436656 Bull TATTOO: 5185

Sitz Invasion 574D #Connealy Conquest
SITZ Drive 625F #Sitz Supermama 173Z
 19102562 #SITZ Miss Burgess 304D Sitz Game Day 748a
 Sitz Miss Burgess 138Y
 Topp United 9015 #Musgrave Aviator
Topp Pride 1664 Topp Blackbird 6078
 20324943 Topp Pride 9844 Topp Barron 6148
 #TA Pride 3752

CED	BW	WW	YW	MILK	DOC	CLAW	ANGLE	FL	HP	YH	SC	MB	RE	
5	1.9	76	139	26	22	0.53	0.54	1.12	10.9	1	0.55	0.27	0.33	
		30%	25%					25%		10%				
\$M	\$W	\$C	ANGUS ^{GS}				Act. BW	ADJ-205	ADJ-365	ADJ YEARLING SC				
67	71	204					81	796	1391	37.03				

71 TOPP DRIVE 520I

DOB: 03/05/25 AAA: 21436662 Bull TATTOO: 5201

Sitz Invasion 574D #Connealy Conquest
SITZ Drive 625F #Sitz Supermama 173Z
 19102562 #SITZ Miss Burgess 304D Sitz Game Day 748a
 Sitz Miss Burgess 138Y
 S A V Cattlemaster 4873 #Connealy Consensus 7229
Topp Barbara 2043 S A V Emblynette 7545
 20397958 Topp Barbara 6169 #Musgrave Big Sky
 #TC Barbara 3088

CED	BW	WW	YW	MILK	DOC	CLAW	ANGLE	FL	HP	YH	SC	MB	RE	
16	-0.2	61	109	34	20	0.28	0.48	1.22	12.4	0.8	1.97	0.78	0.66	
	2%	20%		10%		2%		2%		25%	4%			
\$M	\$W	\$C	ANGUS ^{GS}				Act. BW	ADJ-205	ADJ-365	ADJ YEARLING SC				
103	75	287					72	669	1219	34.88				
	2%	30%												

72 TOPP DRIVE 5210

DOB: 03/14/25 AAA: 21436665 Bull TATTOO: 5210

Sitz Invasion 574D #Connealy Conquest
SITZ Drive 625F #Sitz Supermama 173Z
 19102562 #SITZ Miss Burgess 304D Sitz Game Day 748a
 Sitz Miss Burgess 138Y
 #Hoover No Doubt #Mogck Bullseye
Topp Peggy 2042 Miss Blackcap Ellston J2
 20396123 Topp Peggy 7864 #HA Cowboy Up 5405
 Topp Peggy 4277

CED	BW	WW	YW	MILK	DOC	CLAW	ANGLE	FL	HP	YH	SC	MB	RE	
6	3.6	71	121	22	9	0.37	0.43	1.07	13	0.6	1.29	0.74	0.17	
						15%	30%		30%	45%	25%			
\$M	\$W	\$C	ANGUS ^{GS}				Act. BW	ADJ-205	ADJ-365	ADJ YEARLING SC				
72	58	235					85	752	1312	38.66				



Topp Peggy 7864, Maternal Granddam to Lot 72

73 TOPP DRIVE 521I

DOB: 03/15/25 AAA: 21436666 Bull TATTOO: 5211

Sitz Invasion 574D #Connealy Conquest
SITZ Drive 625F #Sitz Supermama 173Z
 19102562 #SITZ Miss Burgess 304D Sitz Game Day 748a
 Sitz Miss Burgess 138Y
 Hamco Raptor 3F #Quaker Hill Rampage 0A36
BBR Georgina 1018 Topp Peggy 6055
 20478800 #TA Georgina 3707 #Mohnen Wolf Creek 1871
 TA Georgina 1338

CED	BW	WW	YW	MILK	DOC	CLAW	ANGLE	FL	HP	YH	SC	MB	RE	
9	0.7	76	139	21	18	0.5	0.53	1.12	10.8	0.9	0.28	0.22	0.34	
		30%	25%					25%		15%				
\$M	\$W	\$C	ANGUS ^{GS}				Act. BW	ADJ-205	ADJ-365	ADJ YEARLING SC				
69	69	238					79	810	1413	35.36				



TA Georgina 3707, Maternal Granddam to Lot 73

74 TOPP BULLDOG 5205

DOB: 03/10/25 AAA: 21436663 Bull TATTOO: 5205

Sitz Domain 12371
Harrell Bulldog 19L
 20691837 SITZ Everelda Entense 305C

Sitz Logo 8148
 #Sitz Emma E 129
 Sitz Identity 7333
 SITZ Everelda Entense 190X
 #HA Cowboy Up 5405
 #TA Ruby 3753
 #Mohnen Wolf Creek 1871
 #TA Marcia 0620

Topp Binford 8343
Topp Marcia 3061
 20758574 Topp Marcia 8076

CED	BW	WW	YW	MILK	DOC	CLAW	ANGLE	FL	HP	YH	SC	MB	RE
4	2.1	82 20%	140 20%	21	7	0.46	0.55	1.11 30%	10.9	0.3 75%	1.73 10%	0.64	0.91 30%
\$M	\$W	\$C	ANGUS ^{GS}				Act. BW	ADJ-205	ADJ-365	ADJ YEARLING SC			
63	75 30%	232					78	794	1405	38.54			



75 TOPP BULLDOG 5139

DOB: 01/25/25 AAA: 21381519 Bull TATTOO: 5139

Sitz Domain 12371
Harrell Bulldog 19L
 20691837 SITZ Everelda Entense 305C

Sitz Logo 8148
 #Sitz Emma E 129
 Sitz Identity 7333
 SITZ Everelda Entense 190X
 #Connealy Consensus 7229
 S A V Emblynette 7545
 #Mohnen South Dakota 402
 #Topp Barbara 5310

S A V Cattlemaster 4873
Topp Barbara 3117
 20753311 Topp Barbara 8408

CED	BW	WW	YW	MILK	DOC	CLAW	ANGLE	FL	HP	YH	SC	MB	RE
6	-1 10%	58	96	36 5%	21	0.4 20%	0.52	1.09	12.1	-0.1 95%	1.86 5%	0.88	0.73
\$M	\$W	\$C	ANGUS ^{GS}				Act. BW	ADJ-205	ADJ-365	ADJ YEARLING SC			
105 2%	81 20%	268					67	756	1172	40.63			

76 TOPP BULLDOG 5144

DOB: 01/28/25 AAA: 21436649 Bull TATTOO: 5144

Sitz Domain 12371
Harrell Bulldog 19L
 20691837 SITZ Everelda Entense 305C

Sitz Logo 8148
 #Sitz Emma E 129
 Sitz Identity 7333
 SITZ Everelda Entense 190X
 #Basin Advance 3134
 Basin Lucy 4288
 #Connealy Capitalist 028
 TA Pleasant Mary 2114

Basin Deposit 6249
Topp Pleasant Mary 3115
 20753361 Topp Pleasant Mary 5313

CED	BW	WW	YW	MILK	DOC	CLAW	ANGLE	FL	HP	YH	SC	MB	RE
7	0.1 25%	80 20%	141 20%	24	8	0.38 20%	0.42 20%	1.15 15%	14.9 10%	0.8 25%	0.72 15%	1.23 15%	0.75
\$M	\$W	\$C	ANGUS ^{GS}				Act. BW	ADJ-205	ADJ-365	ADJ YEARLING SC			
101 3%	83 15%	324 15%					65	757	1275	35.73			

77 TOPP BULLDOG 5186

DOB: 02/18/25 AAA: 21381522 Bull TATTOO: 5186

Sitz Domain 12371
Harrell Bulldog 19L
 20691837 SITZ Everelda Entense 305C

Sitz Logo 8148
 #Sitz Emma E 129
 Sitz Identity 7333
 SITZ Everelda Entense 190X
 #Connealy Consensus 7229
 S A V Emblynette 7545
 #Mohnen Wolf Creek 1871
 TA Ruby 3708

S A V Cattlemaster 4873
Topp Ruby 3053
 20756553 Topp Ruby 5307

CED	BW	WW	YW	MILK	DOC	CLAW	ANGLE	FL	HP	YH	SC	MB	RE
8	1.4	68	127	26	10	0.35 10%	0.41 20%	1.17 10%	12.8	0.6 45%	1.98 3%	0.35	0.7
\$M	\$W	\$C	ANGUS ^{GS}				Act. BW	ADJ-205	ADJ-365	ADJ YEARLING SC			
103 2%	69	252					84	712	1235	37.4			



Topp Barbara 5310,
3rd Generation Dam to Lot 75

Topp Pleasant Mary 5313,
Maternal Granddam to Lot 76

Topp Ruby 5307,
Maternal Granddam to Lot 77



Topp Barbara 7810,
Maternal Granddam to Lot 80

78 TOPP BULLDOG 5135

DOB: 01/24/25 AAA: 21381518 Bull TATTOO: 5135

Sitz Domain 12371
Harrell Bulldog 19L
 20691837 SITZ Everelda Entense 305C

Sitz Logo 8148
 #Sitz Emma E 129
 Sitz Identity 7333
 SITZ Everelda Entense 190X
 #Baldrige 38 Special
 Topp Ruby 5307
 SITZ Drive 625F
 #Topp Peggy 7824

Topp 50 Cal 1006
Topp Peggy 2304
 20618091 Topp Peggy 0507

CED	BW	WW	YW	MILK	DOC	CLAW	ANGLE	FL	HP	YH	SC	MB	RE
14 4%	-1.9 4%	58	99	23	13	0.45	0.49	1.16 10%	8.6	0.1 90%	0.84	0.66	0.3

Act. BW	ADJ-205	ADJ-365	ADJ YEARLING SC
71	770	1303	38.6

\$M	\$W	\$C
84 15%	62	214

ANGUS_{GS}

79 TOPP BULLDOG 5140

DOB: 01/27/25 AAA: 21381520 Bull TATTOO: 5140

Sitz Domain 12371
Harrell Bulldog 19L
 20691837 SITZ Everelda Entense 305C

Sitz Logo 8148
 #Sitz Emma E 129
 Sitz Identity 7333
 SITZ Everelda Entense 190X
 #FF Black Gold JF C19
 MFA Princess 23D
 #S S Niagara Z29
 #Topp Ruby 7002

MFA Cecil 35H
Topp Ruby 3164
 20749257 Topp Ruby 1039

CED	BW	WW	YW	MILK	DOC	CLAW	ANGLE	FL	HP	YH	SC	MB	RE
2	2.6	83 15%	148 15%	19	19	0.45	0.42 25%	1.1	14.3 15%	0.5 55%	1.17	0.49	0.72

Act. BW	ADJ-205	ADJ-365	ADJ YEARLING SC
73	778	1324	36.19

\$M	\$W	\$C
87 15%	72	276

ANGUS_{GS}

80 TOPP BULLDOG 5199

DOB: 03/03/25 AAA: 21436660 Bull TATTOO: 5199

Sitz Domain 12371
Harrell Bulldog 19L
 20691837 SITZ Everelda Entense 305C

Sitz Logo 8148
 #Sitz Emma E 129
 Sitz Identity 7333
 SITZ Everelda Entense 190X
 #Connealy Consensus 7229
 S A V Emblynette 7545
 #HA Cowboy Up 5405
 #Topp Barbara 5374

S A V Cattlemaster 4873
Topp Barbara 3023
 20753317 Topp Barbara 7810

CED	BW	WW	YW	MILK	DOC	CLAW	ANGLE	FL	HP	YH	SC	MB	RE
4	0.1 25%	67	118	27	23	0.46	0.48	1.13 20%	11	0.2 85%	0.85	0.52	0.79

Act. BW	ADJ-205	ADJ-365	ADJ YEARLING SC
74	715	1221	36.31

\$M	\$W	\$C
98 4%	77 25%	264

ANGUS_{GS}



Topp Marcia 9806,
Dam of Lot 81



81 TOPP LEVEE 5200

DOB: 03/04/25 AAA: 21436661 Bull TATTOO: 5200

Raven Levee 3125 #Hoover Dam
Raven Levee 1708 Brazila of Conanga 3991 839A
 20316180 Sitz Emma E 2738 #Connealy Thunder
 Sitz Emma E 2253
 TC Freal 625 #EF Authentic 0829
Topp Marcia 9806 TC Grmaker 4063
 19863035 TC Marcia 7062 #Sitz Tradition RLS 8702
 #TC Marcia 1069

CED	BW	WW	YW	MILK	DOC	CLAW	ANGLE	FL	HP	YH	SC	MB	RE
-1	4	87	143	28	25	0.45	0.52	1.15	12.2	0.6	1.66	0.47	1.11
		10%	20%		25%			15%		45%	10%		10%

\$M	\$W	\$C	ANGUS ^{GS}	Act. BW	ADJ-205	ADJ-365	ADJ YEARLING SC
95	87	318		93	795	1403	37.82
5%	10%	15%					

83 TOPP LEVEE 5183

DOB: 02/14/25 AAA: 21436655 Bull TATTOO: 5183

Raven Levee 3125 #Hoover Dam
Raven Levee 1708 Brazila of Conanga 3991 839A
 20316180 Sitz Emma E 2738 #Connealy Thunder
 Sitz Emma E 2253
 #Mohnen South Dakota 402 Mohnen Density 730
Topp Barbara 8461 Mohnen Jilt 539
 19456432 #Topp Barbara 4332 Ellingson Efficiency 0102
 TA Barbara 1329

CED	BW	WW	YW	MILK	DOC	CLAW	ANGLE	FL	HP	YH	SC	MB	RE
-8	6.6	84	138	23	22	0.61	0.56	1.03	12.2	0.8	1.77	0.35	0.52
		75%	25%							25%	10%		

\$M	\$W	\$C	ANGUS ^{GS}	Act. BW	ADJ-205	ADJ-365	ADJ YEARLING SC
60	65	231		95	808	1301	39.74

82 TOPP LEVEE 5161

DOB: 02/06/25 AAA: 21523246 Bull TATTOO: 5161

Raven Levee 3125 #Hoover Dam
Raven Levee 1708 Brazila of Conanga 3991 839A
 20316180 Sitz Emma E 2738 #Connealy Thunder
 Sitz Emma E 2253
 #S S Niagara Z29 #Hoover Dam
Topp Ruby 1040 Jet S S X144
 20108213 #Topp Ruby 7002 #Basin Payweight 1075
 TC Ruby 6530

CED	BW	WW	YW	MILK	DOC	CLAW	ANGLE	FL	HP	YH	SC	MB	RE
2	1.9	76	131	26	22	0.52	0.56	1.12	13.5	0.3	1.63	0.6	0.49

\$M	\$W	\$C	ANGUS ^{GS}	Act. BW	ADJ-205	ADJ-365	ADJ YEARLING SC
78	75	293		89			

84 TOPP LEVEE 5209

DOB: 03/13/25 AAA: 21436664 Bull TATTOO: 5209

Raven Levee 3125 #Hoover Dam
Raven Levee 1708 Brazila of Conanga 3991 839A
 20316180 Sitz Emma E 2738 #Connealy Thunder
 Sitz Emma E 2253
 #Musgrave Big Sky #Connealy Earnan 076E
Topp Donna 7023 SAV Primrose 7861
 18804632 Coleman Donna 0176 #Hero 6267 of R R 2418
 KMK Donna J311

CED	BW	WW	YW	MILK	DOC	CLAW	ANGLE	FL	HP	YH	SC	MB	RE
8	0.1	72	129	31	27	0.47	0.46	1.19	14.9	0.5	1.38	0.52	0.64
	25%			20%	15%			4%	10%	55%	20%		

\$M	\$W	\$C	ANGUS ^{GS}	Act. BW	ADJ-205	ADJ-365	ADJ YEARLING SC
96	80	301		84	738	1279	37.61
5%	20%	25%					





Basin Deposit 6249

Topp Pride 8044

Lots 85 – 89 are an outcross set of brothers from the pathfinder and 3rd generation donor Topp Pride 8044. Deposit was used for his excellent foot design and his ability to transmit marbling traits into his offspring. These brothers will offer their offspring added feedlot value and the added functionality and longevity associated with the Pride cow family.

Flush Brothers
LOTS 85 - 89



85 TOPP DEPOSIT 5176
DOB: 02/12/25 AAA: +21492292 Bull TATTOO: 5176

#Basin Advance 3134 #G A R Progress
Basin O Lass 1663
Basin Deposit 6249 #EXAR Denver 2002B
18558289 Basin Lucy 4288
Basin Lucy 1037
#Mohnen Wolf Creek 1871 #H A Image Maker 0415
#Topp Pride 8044 Mohnen Jilt 1283
19225375 TC Pride 4226 #TC Freedom 104
#TC Pride 8067

CED	BW	WW	YW	MILK	DOC	CLAW	ANGLE	FL	HP	YH	SC	MB	RE	
2	4.3	80	132	22	30	0.25	0.28	1.04	8.3	0.7	0.77	0.7	0.17	
		20%			10%	1%	1%			35%				
\$M	\$W	\$C	ANGUS ^{GS}				Act. BW	ADJ-205	ADJ-365	ADJ YEARLING SC				
64	64	233					93	815	1381	39.68				

86 TOPP DEPOSIT 5166
DOB: 02/08/25 AAA: +21492289 Bull TATTOO: 5166

CED	BW	WW	YW	MILK	DOC	CLAW	ANGLE	FL	HP	YH	SC	MB	RE	
16	-1.1	54	101	28	13	0.32	0.43	1.12	10.6	0.4	0.4	0.97	0.1	
2%	10%					4%	30%	25%		65%		30%		
\$M	\$W	\$C	ANGUS ^{GS}				Act. BW	ADJ-205	ADJ-365	ADJ YEARLING SC				
61	53	243					85	736	1235	37.55				

87 TOPP DEPOSIT 5171
DOB: 02/09/25 AAA: +21492316 Bull TATTOO: 5171

CED	BW	WW	YW	MILK	DOC	CLAW	ANGLE	FL	HP	YH	SC	MB	RE	
8	2.7	72	129	22	22	0.33	0.38	1.05	8.9	0.8	0.77	0.82	0.14	
						5%	15%			25%				
\$M	\$W	\$C	ANGUS ^{GS}				Act. BW	ADJ-205	ADJ-365	ADJ YEARLING SC				
59	58	238					90	780	1274	37.58				

88 TOPP DEPOSIT 5175
DOB: 02/10/25 AAA: +21492291 Bull TATTOO: 5175

CED	BW	WW	YW	MILK	DOC	CLAW	ANGLE	FL	HP	YH	SC	MB	RE	
-1	6	79	137	20	18	0.27	0.39	1.1	9.8	0.8	1.06	0.67	0.07	
		25%				7%	15%			25%				
\$M	\$W	\$C	ANGUS ^{GS}				Act. BW	ADJ-205	ADJ-365	ADJ YEARLING SC				
60	51	216					94	757	1400	37.62				

89 TOPP DEPOSIT 5165
DOB: 02/08/25 AAA: +21429942 Bull TATTOO: 5165

CED	BW	WW	YW	MILK	DOC	CLAW	ANGLE	FL	HP	YH	SC	MB	RE	
8	0.6	65	106	35	-8	0.39	0.41	1.04	13.8	0.7	0.3	0.94	0.43	
				10%		15%	20%		20%	35%				
\$M	\$W	\$C	ANGUS ^{GS}				Act. BW	ADJ-205	ADJ-365	ADJ YEARLING SC				
64	77	235					86	699	1227	35.05				

90



90 TOPP RAINMAKER 5034
 DOB: 01/07/25 AAA: 21429575 Bull TATTOO: 5034

Basin Rainmaker 2704 #Basin Rainmaker P175
 #Basin Rainmaker 4404 #Basin Erica 7520 BV
 17913751 Basin Joy 1036 #Basin Payweight 107S
 Basin Joy 566T
 Topp 50 Cal 1006 #Baldridge 38 Special
Topp Marcia 3101 Topp Ruby 5307
 20749238 Topp Marcia 1065 Hamco Raptor 3F
 Topp Marcia 7035

CED	BW	WW	YW	MILK	DOC	CLAW	ANGLE	FL	HP	YH	SC	MB	RE
11 15%	-0.9 15%	68	117	26	11	0.37 15%	0.36 10%	1.18 10%	11.7	0.4 65%	0.86	0.41	1.17 10%
\$M	\$W	\$C	ANGUS ^{GS}				Act. BW	ADJ-205	ADJ-365	ADJ YEARLING SC			
83 20%	72	261					76	792	1245	37.55			

91 TOPP RAINMAKER 5124
 DOB: 01/18/25 AAA: 21429948 Bull TATTOO: 5124

Basin Rainmaker 2704 #Basin Rainmaker P175
 #Basin Rainmaker 4404 #Basin Erica 7520 BV
 17913751 Basin Joy 1036 #Basin Payweight 107S
 Basin Joy 566T
 S A V Cattlemaster 4873 #Connealy Consensus 7229
Topp Donna 2016 S A V Emblynette 7545
 20397960 Topp Donna 7023 #Musgrave Big Sky
 Coleman Donna 0176

CED	BW	WW	YW	MILK	DOC	CLAW	ANGLE	FL	HP	YH	SC	MB	RE
7	0.3 30%	62	106	31 20%	13	0.44	0.43 30%	1.1	14.8 10%	0.2 85%	0.34	0.39	0.8
\$M	\$W	\$C	ANGUS ^{GS}				Act. BW	ADJ-205	ADJ-365	ADJ YEARLING SC			
95 5%	74	264					75	736	1248	37.4			



Topp Marcia 7035,
 3rd Generation Dam to Lot 90







Fall Bulls



92



92 TOPP JIGSAW 4679
 DOB: 08/11/24 AAA: +21330414 Bull TATTOO: 4679

#S A V Rainfall 6846 #Coleman Charlo 0256
Baldrige Jigsaw J523 S A V Blackcap May 4136
 20047698 Baldrige Isabel G336 #Spring Cove Reno 4021
 #SVA The Donald 4030 #Baldrige Isabel Y69
Topp Barbara 8426 #Sitz Investment 660Z
 19419618 Topp Barbara 5425 #SVA Eileen 9051
 #Mohnen Wolf Creek 1871
 TC Barbara 5016

CED	BW	WW	YW	MILK	DOC	CLAW	ANGLE	FL	HP	YH	SC	MB	RE
9	0.6	68	123	22	30	0.29	0.44	1.18	14.2	0.4	1.57	0.65	0.72
30%					10%	2%		10%	15%	65%	15%		

\$M	\$W	\$C	ANGUS ^{BS}	Act. BW	ADJ-205	ADJ-365	CURRENT SC
103	64	291		81	690	1165	41.5
2%		30%					

Topp Jigsaw 4679 is flat out thick, standing on the incredible foot quality apparent in this sale and the Jigsaw sire group. He's out of a hard-working Donald daughter with production ratios of 94 at birth, 105 at weaning, and 106 at yearling, backing up the genetics with real world performance. Moderate framed and built right, this bull is the kind that will make outstanding replacement females and add muscle and consistency to his offspring.



Topp Barbara 8426,
 Dam to Lot 92



Baldridge Jigsaw J523

If consistency is what you're after, study this flush closely.

These brothers are sired by Baldridge Jigsaw and backed by the elite Peggy 7837 cow; the dam of Topp Lincoln 1596, the powerhouse bull of our 2022 sale and sire of our heaviest calves from this past fall calving season. Lincoln set the bar high, and quite honestly, this set of brothers may raise it even further.

The uniformity and power in this flush is impressive. They offer unmatched thickness, true base width, and as much bone and foot size as any Angus bull I've ever seen.

They are moderate framed but absolutely pack the pounds. Big topped, wide pinned, and bold centered, this is the kind that adds payweight and substance in a hurry.



Topp Barbara 7837

Topp Peggy 0641,
Maternal Granddam



93 TOPP JIGSAW 4654
DOB: 08/07/24 AAA: +21330617 Bull TATTOO: 4654

- #S A V Rainfall 6846
- #Coleman Charlo 0256
- Baldridge Jigsaw J523**
- S A V Blackcap May 4136
- 20047698 Baldridge Isabel G336
- #Spring Cove Reno 4021
- Baldridge Isabel Y69
- #SVA The Donald 4030
- #Sitz Investment 660Z
- #Topp Peggy 7837**
- #SVA Eileen 9051
- 19158724 #TA Peggy 0641
- G V F Forward 8110
- TC Peggy 4096

CED	BW	WW	YW	MILK	DOC	CLAW	ANGLE	FL	HP	YH	SC	MB	RE
4	3	72	135	33	26	0.17	0.36	1.09	15.5	0.5	1.4	0.69	0.56
			30%	15%	20%	1%	10%		10%	55%	20%		

\$M	\$W	\$C	ANGUS ^{GS}	Act. BW	ADJ-205	ADJ-365	CURRENT SC
103	74	295		86	762	1253	42
2%		30%					

Flush Brothers
LOTS 93 - 95





94

T 94 **TOPP JIGSAW 4696**

DOB: 08/12/24 AAA: +21330625 Bull TATTOO: 4696

CED	BW	WW	YW	MILK	DOC	CLAW	ANGLE	FL	HP	YH	SC	MB	RE
4	3.2	72	136 25%	25	13	0.26 1%	0.4 20%	1.18 10%	14.6 15%	0.4 65%	1.52 15%	0.75	0.72

\$M	\$W	\$C
92 10%	60	287

ANGUS^{GS}

Act. BW	ADJ-205	ADJ-365	CURRENT SC
91	657	1185	42



95

T 95 **TOPP JIGSAW 4710**

DOB: 08/18/24 AAA: +21330628 Bull TATTOO: 4710

CED	BW	WW	YW	MILK	DOC	CLAW	ANGLE	FL	HP	YH	SC	MB	RE
4	2.9	83 15%	140 20%	25	25 25%	0.24 7%	0.46	1.14 15%	14.8 10%	0.4 65%	1.82 10%	0.92	0.73

\$M	\$W	\$C
95 5%	77 25%	334 10%

ANGUS^{GS}

Act. BW	ADJ-205	ADJ-365	CURRENT SC
91	757	1205	42.5



96 **TOPP JIGSAW 4633**
 DOB: 08/05/24 AAA: 21330538 Bull TATTOO: 4633

#S A V Rainfall 6846
Baldrige Jigsaw J523
 20047698 Baldrige Isabel G336

#SVA The Donald 4030
Topp Marcia 8444
 19419615 TA Marcia 0616

#Coleman Charlo 0256
 S A V Blackcap May 4136
 #Spring Cove Reno 4021
 Baldrige Isabel Y69
 #Sitz Investment 660Z
 #SVA Eileen 9051
 #Vin-Mar Focus In 8847
 TC Marcia 6170

CED	BW	WW	YW	MILK	DOC	CLAW	ANGLE	FL	HP	YH	SC	MB	RE
9	0.1	65	119	27	18	0.3	0.42	1.08	13	0	1.14	0.78	0.56
30%	25%					3%	25%		30%	95%			

\$M	\$W	\$C	ANGUS	Act. BW	ADJ-205	ADJ-365	CURRENT SC
86	68	292		74	686	1107	40
15%		30%					



97 **TOPP JIGSAW 4622**
 DOB: 08/04/24 AAA: 21330554 Bull TATTOO: 4622

#S A V Rainfall 6846
Baldrige Jigsaw J523
 20047698 Baldrige Isabel G336

#HA Cowboy Up 5405
Topp Forever 7840
 19165159 Topp Forever 5028

#Coleman Charlo 0256
 S A V Blackcap May 4136
 #Spring Cove Reno 4021
 Baldrige Isabel Y69
 HA Outside 3008
 #HA Blackcap Lady 1602
 #Mohnen Wolf Creek 1871
 TC Forever 6123

CED	BW	WW	YW	MILK	DOC	CLAW	ANGLE	FL	HP	YH	SC	MB	RE
7	2	70	118	22	16	0.27	0.33	1.17	15	0.4	1.2	0.31	0.53
						1%	3%	10%	10%	65%	30%		

\$M	\$W	\$C	ANGUS	Act. BW	ADJ-205	ADJ-365	CURRENT SC
93	63	234		92	651	1093	42
10%							





Topp Ruby 7861,
Dam of Lot 98



98

98 TOPP JIGSAW 4659
 DOB: 08/08/24 AAA: 21330555 Bull TATTOO: 4659

#S A V Rainfall 6846 #Coleman Charlo 0256
Baldrige Jigsaw J523 S A V Blackcap May 4136
 20047698 Baldrige Isabel G336 #Spring Cove Reno 4021
 Baldrige Isabel Y69
 #HA Cowboy Up 5405 HA Outside 3008
#Topp Ruby 7861 #HA Blackcap Lady 1602
 19165153 Topp Ruby 5306 #Mohnen Wolf Creek 1871
 TA Ruby 0602

CED	BW	WW	YW	MILK	DOC	CLAW	ANGLE	FL	HP	YH	SC	MB	RE
-2	5	89 10%	153 10%	23 30%	24	0.45	0.49	1.06	10.9	0.6 45%	1.69 10%	0.84	0.29

\$M	\$W	\$C	Act. BW	ADJ-205	ADJ-365	CURRENT SC
56	71	230	91	798	1278	43.5

ANGUS

99 TOPP JIGSAW 4628
 DOB: 08/05/24 AAA: 21330537 Bull TATTOO: 4628

#S A V Rainfall 6846 #Coleman Charlo 0256
Baldrige Jigsaw J523 S A V Blackcap May 4136
 20047698 Baldrige Isabel G336 #Spring Cove Reno 4021
 Baldrige Isabel Y69
 #Mohnen South Dakota 402 Mohnen Density 730
Topp Barbara 8450 Mohnen Jilt 539
 19456597 Topp Barbara 5003 #Mohnen Wolf Creek 1871
 TC Barbara 5016

CED	BW	WW	YW	MILK	DOC	CLAW	ANGLE	FL	HP	YH	SC	MB	RE
2	4.8	93 4%	156 10%	28	18	0.35 10%	0.42 25%	0.98	10.9	0.5 55%	0.9	0.68	1.08 15%

\$M	\$W	\$C	Act. BW	ADJ-205	ADJ-365	CURRENT SC
66	85 15%	298 30%	88	719	1170	39.5

ANGUS

100 TOPP JIGSAW 4636
 DOB: 08/05/24 AAA: 21330631 Bull TATTOO: 4636

#S A V Rainfall 6846 #Coleman Charlo 0256
Baldrige Jigsaw J523 S A V Blackcap May 4136
 20047698 Baldrige Isabel G336 #Spring Cove Reno 4021
 Baldrige Isabel Y69
 #SVA The Donald 4030 #Sitz Investment 660Z
#Topp Peggy 7824 #SVA Eileen 9051
 19158661 #Topp Peggy 5355 #Mohnen Wolf Creek 1871
 #TC Peggy 5092

CED	BW	WW	YW	MILK	DOC	CLAW	ANGLE	FL	HP	YH	SC	MB	RE
5	2.3	68	122	28	27	0.4 15%	0.38 15%	1.15 15%	16.5 2%	0.4 65%	1.15	0.77	1.08 15%

\$M	\$W	\$C	Act. BW	ADJ-205	ADJ-365	CURRENT SC
93 10%	64	312 20%	87	664	1126	39

ANGUS

101 TOPP JIGSAW 4637
 DOB: 08/05/24 AAA: 21330536 Bull TATTOO: 4637

#S A V Rainfall 6846 #Coleman Charlo 0256
Baldrige Jigsaw J523 S A V Blackcap May 4136
 20047698 Baldrige Isabel G336 #Spring Cove Reno 4021
 Baldrige Isabel Y69
 #S S Niagara Z29 #Hoover Dam
Topp Ruby 9706 Jet S S X144
 19737153 TA Ruby 3711 SITZ Dash 11100
 TA Ruby 0602

CED	BW	WW	YW	MILK	DOC	CLAW	ANGLE	FL	HP	YH	SC	MB	RE
1	3.7	81 20%	149 15%	23	14	0.25 1%	0.39 15%	1.14 15%	15.8 4%	0.9 15%	1.5 15%	1.29 15%	0.61

\$M	\$W	\$C	Act. BW	ADJ-205	ADJ-365	CURRENT SC
68	61	335 10%	88	635	1078	41

ANGUS

102 TOPP JIGSAW 4724
 DOB: 08/25/24 AAA: 21330634 Bull TATTOO: 4724

#S A V Rainfall 6846 #Coleman Charlo 0256
Baldrige Jigsaw J523 S A V Blackcap May 4136
 20047698 Baldrige Isabel G336 #Spring Cove Reno 4021
 Baldrige Isabel Y69
 Sitz Icon 1054 #GDAR Game Day 449
#Topp Barbara 4323 #Sitz Beebe Queen 1956
 18199358 TC Barbara 5016 #B C C Bushwacker 41-93
 #TC Barbara 3088

CED	BW	WW	YW	MILK	DOC	CLAW	ANGLE	FL	HP	YH	SC	MB	RE
0	2.4	76 30%	134 30%	16	30	0.52	0.41 20%	1.22 2%	12.7	0.5 55%	1.43 20%	0.55	0.81

\$M	\$W	\$C	Act. BW	ADJ-205	ADJ-365	CURRENT SC
82 20%	58	283	88	706	1090	41

ANGUS

103



103 TOPP DOMAIN 4606
 DOB: 08/02/24 AAA: 21320238 Bull TATTOO: 4606

Woodhill Relevance
Woodhill Domain B56-J345
 20054370 Woodhill Evergreen Y121-B56

#Connealy Confidence Plus
 Woodhill Blackbird X197-Z7
 #Plattemere Weigh Up K360
 Woodhill Evergreen T136-Y121
 #V D A R Really Windy 4097
 TA Marcia 0616
 Sitz Icon 1054
 TC Forever 6123

Topp Hancock 2154
#Topp Georgina 6223
 18767813 Topp Forever 4218

CED	BW	WW	YW	MILK	DOC	CLAW	ANGLE	FL	HP	YH	SC	MB	RE
11 15%	0.2 30%	70	124	26	27 15%	0.35 10%	0.3 2%	1.16 10%	12.8	0.3 75%	-0.15	0.78	0.94 25%

\$M	\$W	\$C	ANGUS ^{GS}	Act. BW	ADJ-205	ADJ-365	CURRENT SC
119 1%	76 30%	286		86	707	1198	40

A calving ease herd bull prospect backed by longevity and maternal excellence out of Topp Georgina 6223 - a 10-year-old pathfinder cow with excellent feet and an ideal udder. 6223 is maintaining a 364-day calving interval on her first 8 calves, settling a.i. as a fall cow every year. Her production ratios include BR 98, WR 106, YR 101

Topp Domain 4606 offers the kind of durability and functionality we strive to build into every generation. This bull is smooth made and clean fronted, with tremendous rib shape and capacity, while maintaining a very sound structure on a great set of feet and legs.

The combination of Domain's ability to stamp them correct with the tried-and-true record of a cow that's been there done that is the safest bet you can make.



Topp Georgina 6223,
 Dam of Lot 103



Topp Erianna 0516,
Dam of Lot 104



104 TOPP DOMAIN 4630

DOB: 08/05/24 AAA: 21320242 Bull TATTOO: 4630

Woodhill Relevance #Connealy Confidence Plus
Woodhill Domain B56-J345 Woodhill Blackbird X197-Z7
 20054370 Woodhill Evergreen Y121-B56 #Plattemere Weigh Up K360
 Woodhill Evergreen T136-Y121
 SITZ Drive 625F Sitz Invasion 574D
Topp Erianna 0516 #SITZ Miss Burgess 304D
 20127329 #Topp Erianna 7938 #SVA The Donald 4030
 #Topp Erianna 4254

CED	BW	WW	YW	MILK	DOC	CLAW	ANGLE	FL	HP	YH	SC	MB	RE
8	-0.7	75	141	17	16	0.36	0.47	1.11	13.2	0.6	0.93	0.84	0.94
	20%	15%	20%		10%	10%		30%	30%	45%			25%

\$M	\$W	\$C	ANGUS ^{GS}	Act. BW	ADJ-205	ADJ-365	CURRENT SC
73	62	300		76	723	1206	40
		25%					

105 TOPP DOMAIN 4612

DOB: 08/03/24 AAA: 21320240 Bull TATTOO: 4612

Woodhill Relevance #Connealy Confidence Plus
Woodhill Domain B56-J345 Woodhill Blackbird X197-Z7
 20054370 Woodhill Evergreen Y121-B56 #Plattemere Weigh Up K360
 Woodhill Evergreen T136-Y121
 Topp United 9015 #Musgrave Aviator
Topp Barbara 1656 Topp Blackbird 6078
 20324940 Topp Barbara 9765 #Baldridge 38 Special
 #TA Barbara 3702

CED	BW	WW	YW	MILK	DOC	CLAW	ANGLE	FL	HP	YH	SC	MB	RE
10	-0.7	75	132	33	25	0.39	0.34	1.16	6.6	0.5	0.96	0.59	0.72
	20%	15%	15%	25%	15%	15%	4%	10%		55%			

\$M	\$W	\$C	ANGUS ^{GS}	Act. BW	ADJ-205	ADJ-365	CURRENT SC
88	90	266		75	803	1203	40.5
		10%					

106 TOPP DOMAIN 4664

DOB: 08/09/24 AAA: 21320248 Bull TATTOO: 4664

Woodhill Relevance #Connealy Confidence Plus
Woodhill Domain B56-J345 Woodhill Blackbird X197-Z7
 20054370 Woodhill Evergreen Y121-B56 #Plattemere Weigh Up K360
 Woodhill Evergreen T136-Y121
 #Basin Excitement Basin Expedition R156
Mohnen Erianna 153 Basin Lady S532 AK
 18307101 Mohnen Erianna 2576 #Leachman Right Time
 Mohnen Erianna 129

CED	BW	WW	YW	MILK	DOC	CLAW	ANGLE	FL	HP	YH	SC	MB	RE
10	-1.9	70	123	22	22	0.49	0.39	1.07	10.4	0.8	0.65	0.41	0.91
	20%	4%				15%				25%			30%

\$M	\$W	\$C	ANGUS ^{GS}	Act. BW	ADJ-205	ADJ-365	CURRENT SC
68	67	266		72	730	1236	38.5

107 TOPP DOMAIN 4711

DOB: 08/19/24 AAA: 21320254 Bull TATTOO: 4711

Woodhill Relevance #Connealy Confidence Plus
Woodhill Domain B56-J345 Woodhill Blackbird X197-Z7
 20054370 Woodhill Evergreen Y121-B56 #Plattemere Weigh Up K360
 Woodhill Evergreen T136-Y121
 Hamco Raptor 3F #Quaker Hill Rampage 0A36
Topp Barbara 2323 Topp Peggy 6055
 20618092 Topp Barbara 1319 #Vin-Mar Focus In 8847
 #TC Barbara 3088

CED	BW	WW	YW	MILK	DOC	CLAW	ANGLE	FL	HP	YH	SC	MB	RE
6	1	76	136	22	23	0.4	0.4	1.09	10.1	0.3	1.23	0.56	0.63
		30%	25%			20%	20%			75%	30%		

\$M	\$W	\$C	ANGUS ^{GS}	Act. BW	ADJ-205	ADJ-365	CURRENT SC
77	71	257		77	614		39
		30%					

Topp Barbara 1656,
Dam of Lot 105



Mohnen Erianna 153,
Dam of Lot 106



108



108 TOPP DOMAIN 4647
 DOB: 08/06/24 AAA: 21320245 Bull TATTOO: 4647

Woodhill Relevance #Connealy Confidence Plus
Woodhill Domain B56-J345 Woodhill Blackbird X197-Z7
 20054370 Woodhill Evergreen Y121-B56 #Plattemere Weigh Up K360
 #SVA The Donald 4030 Woodhill Evergreen T136-Y121
Topp Peggy 9727 #Sitz Investment 660Z
 19737114 Topp Peggy 6167 #SVA Eileen 9051
 Circle A Mogul 3463
 #TA Peggy 0641

CED	BW	WW	YW	MILK	DOC	CLAW	ANGLE	FL	HP	YH	SC	MB	RE
6	1.1	75	129	23	22	0.48	0.42 25%	1.22 2%	15.1 10%	0.4 65%	1.38 20%	0.77	0.8

\$M	\$W	\$C	ANGUS ^{GS}	Act. BW	ADJ-205	ADJ-365	CURRENT SC
112 7%	74	295 30%		76	733	1216	39

109



109 TOPP DOMAIN 4608
 DOB: 08/02/24 AAA: 21320239 Bull TATTOO: 4608

Woodhill Relevance #Connealy Confidence Plus
Woodhill Domain B56-J345 Woodhill Blackbird X197-Z7
 20054370 Woodhill Evergreen Y121-B56 #Plattemere Weigh Up K360
 Topp Binford 8343 Woodhill Evergreen T136-Y121
Topp Georgina 2350 #HA Cowboy Up 5405
 20624197 Topp Georgina 6107 #TA Ruby 3753
 Circle A Mogul 3463
 TC Forever 6123

CED	BW	WW	YW	MILK	DOC	CLAW	ANGLE	FL	HP	YH	SC	MB	RE
6	-0.6 15%	71	134 30%	21	29 10%	0.31 3%	0.35 5%	1.18 10%	15.5 10%	0.4 65%	0.93	0.69	0.87 30%

\$M	\$W	\$C	ANGUS ^{GS}	Act. BW	ADJ-205	ADJ-365	CURRENT SC
92 10%	63	274		73	686	1188	42



110



110 TOPP DOMAIN 4667

DOB: 08/09/24 AAA: 21320249 Bull TATTOO: 4667

Woodhill Relevance
Woodhill Domain B56-J345
 20054370 Woodhill Evergreen Y121-B56

#Connealy Confidence Plus
 Woodhill Blackbird X197-Z7
 #Plattemere Weigh Up K360
 Woodhill Evergreen T136-Y121
 #Quaker Hill Rampage 0A36
 Topp Peggy 6055
 Sitz Icon 1054
 TC Barbara 5016

Hamco Raptor 3F
Topp Barbara 0455
 20127327 Topp Barbara 5022

CED	BW	WW	YW	MILK	DOC	CLAW	ANGLE	FL	HP	YH	SC	MB	RE
3	1.6	78 25%	129	27	20	0.4 20%	0.4 20%	1.09	11	0.2 85%	0.21	0.92	1.21 10%
\$M	\$W	\$C	ANGUS ^{GS}				Act. BW	ADJ-205	ADJ-365	CURRENT SC			
93 10%	85 15%	319 15%					86	751	1218	38			

111



111 TOPP DOMAIN 4698

DOB: 08/13/24 AAA: 21331796 Bull TATTOO: 4698

Woodhill Relevance
Woodhill Domain B56-J345
 20054370 Woodhill Evergreen Y121-B56

#Connealy Confidence Plus
 Woodhill Blackbird X197-Z7
 #Plattemere Weigh Up K360
 Woodhill Evergreen T136-Y121
 #Quaker Hill Rampage 0A36
 Topp Peggy 6055
 #SVA The Donald 4030
 S A V Blackbird 5297

Hamco Raptor 3F
Topp Blackbird 0477
 20082436 Topp Blackbird 6135

CED	BW	WW	YW	MILK	DOC	CLAW	ANGLE	FL	HP	YH	SC	MB	RE
2	2.5	73	131	23	24 30%	0.39 15%	0.24 1%	1.06	12.7	0.3 75%	0.63	0.5	0.78
\$M	\$W	\$C	ANGUS ^{GS}				Act. BW	ADJ-205	ADJ-365	CURRENT SC			
84 15%	64	282					87	657	1179	39			

112



112 TOPP DOMAIN 4738
 DOB: 09/01/24 AAA: 21320258 Bull TATTOO: 4738

Woodhill Relevance #Connealy Confidence Plus
Woodhill Domain B56-J345 Woodhill Blackbird X197-Z7
 20054370 Woodhill Evergreen Y121-B56 #Plattemere Weigh Up K360
 Woodhill Evergreen T136-Y121
 Topp Binford 8343 #HA Cowboy Up 5405
Topp Barbara 0500 #TA Ruby 3753
 20127336 Topp Barbara 7851 #SVA The Donald 4030
 Topp Barbara 1319

CED	BW	WW	YW	MILK	DOC	CLAW	ANGLE	FL	HP	YH	SC	MB	RE
1	4.1	87	144	13	24	0.35	0.34	1.1	11	0.2	0.75	0.49	1.07
		10%	20%		30%	70%	4%			85%			75%
\$M	\$W	\$C	ANGUS ^{GS}				Act. BW	ADJ-205	ADJ-365	CURRENT SC			
76	62	247					91	748	1263	38			
30%													

113 TOPP DOMAIN 4602
 DOB: 08/01/24 AAA: 21320237 Bull TATTOO: 4602

Woodhill Relevance #Connealy Confidence Plus
Woodhill Domain B56-J345 Woodhill Blackbird X197-Z7
 20054370 Woodhill Evergreen Y121-B56 #Plattemere Weigh Up K360
 Woodhill Evergreen T136-Y121
 #Mohnen Wolf Creek 1871 #H A Image Maker 0415
#Topp Peggy 5303 Mohnen Jilt 1283
 18435813 #TC Peggy 5092 #TC Freedom 104
 #TC Peggy 0111

CED	BW	WW	YW	MILK	DOC	CLAW	ANGLE	FL	HP	YH	SC	MB	RE
2	3.1	80	136	22	24	0.39	0.29	1.02	9.3	0.7	0.89	0.36	0.81
		20%	25%		30%	15%	7%			35%			
\$M	\$W	\$C	ANGUS ^{GS}				Act. BW	ADJ-205	ADJ-365	CURRENT SC			
68	69	260					75	648	1072	39			

114 TOPP DOMAIN 4627
 DOB: 08/04/24 AAA: 21320241 Bull TATTOO: 4627

Woodhill Relevance #Connealy Confidence Plus
Woodhill Domain B56-J345 Woodhill Blackbird X197-Z7
 20054370 Woodhill Evergreen Y121-B56 #Plattemere Weigh Up K360
 Woodhill Evergreen T136-Y121
 SITZ Drive 625F Sitz Invasion 574D
Topp Peggy 1655 #SITZ Miss Burgess 304D
 20324917 Topp Barbara 9721 Topp Barron 6148
 #Topp Barbara 5310

CED	BW	WW	YW	MILK	DOC	CLAW	ANGLE	FL	HP	YH	SC	MB	RE
3	2.3	70	131	28	26	0.31	0.33	1.12	14.6	0.5	1	0.85	0.76
					20%	3%	3%	25%	75%	55%			
\$M	\$W	\$C	ANGUS ^{GS}				Act. BW	ADJ-205	ADJ-365	CURRENT SC			
104	68	302					93	632	1046	39			
2%		25%											

115 TOPP DOMAIN 4645
 DOB: 08/06/24 AAA: 21320243 Bull TATTOO: 4645

Woodhill Relevance #Connealy Confidence Plus
Woodhill Domain B56-J345 Woodhill Blackbird X197-Z7
 20054370 Woodhill Evergreen Y121-B56 #Plattemere Weigh Up K360
 Woodhill Evergreen T136-Y121
 S A V Cattlemaster 4873 #Connealy Consensus 7229
Topp Peggy 1584 S A V Emblynette 7545
 20331397 Topp Peggy 7939 Circle A Mogul 3463
 #Topp Peggy 5312

CED	BW	WW	YW	MILK	DOC	CLAW	ANGLE	FL	HP	YH	SC	MB	RE
6	2.7	86	148	29	24	0.37	0.28	1.05	12.9	0.8	2.11	0.68	0.9
		10%	15%	30%	30%	15%	7%		30%	25%	2%		30%
\$M	\$W	\$C	ANGUS ^{GS}				Act. BW	ADJ-205	ADJ-365	CURRENT SC			
90	86	309					88	723	1145	42.5			
10%	15%	20%											





116 TOPP DOMAIN 4673

DOB: 08/11/24 AAA: 21320250 Bull TATTOO: 4673

Woodhill Relevance #Connealy Confidence Plus
Woodhill Domain B56-J345 Woodhill Blackbird X197-Z7
 20054370 Woodhill Evergreen Y121-B56 #Plattemere Weigh Up K360
 Woodhill Evergreen T136-Y121
 Hamco Raptor 3F #Quaker Hill Rampage 0A36
Topp Barbara 2409 Topp Peggy 6055
 20624142 Topp Barbara 1319 #Vin-Mar Focus In 8847
 #TC Barbara 3088

CED	BW	WW	YW	MILK	DOC	CLAW	ANGLE	FL	HP	YH	SC	MB	RE	
2	3	101 1%	170 2%	19	13	0.47	0.28 7%	1.05	13 30%	1 10%	0.49	0.67	1.02 20%	
\$M	\$W	\$C	ANGUS ^{GS}				Act. BW	ADJ-205	ADJ-365	CURRENT SC				
75 30%	87 10%	311 20%					78	860	1359	38.5				

117 TOPP DOMAIN 4653

DOB: 08/07/24 AAA: 21320247 Bull TATTOO: 4653

Woodhill Relevance #Connealy Confidence Plus
Woodhill Domain B56-J345 Woodhill Blackbird X197-Z7
 20054370 Woodhill Evergreen Y121-B56 #Plattemere Weigh Up K360
 Woodhill Evergreen T136-Y121
 #Musgrave Big Sky #Connealy Earnan 076E
Topp Donna 7965 SAV Primrose 7861
 19165080 Coleman Donna 0176 #Hero 6267 of R R 2418
 KMK Donna J311

CED	BW	WW	YW	MILK	DOC	CLAW	ANGLE	FL	HP	YH	SC	MB	RE	
2	3.1	83 15%	134 30%	22	11	0.42 25%	0.39 15%	1.06	14.1 15%	0.5 55%	0.51	0.59	1.02 20%	
\$M	\$W	\$C	ANGUS ^{GS}				Act. BW	ADJ-205	ADJ-365	CURRENT SC				
78 25%	77 25%	271					87	764	1230	41				

118 TOPP DOMAIN 4697

DOB: 08/13/24 AAA: 21320251 Bull TATTOO: 4697

Woodhill Relevance #Connealy Confidence Plus
Woodhill Domain B56-J345 Woodhill Blackbird X197-Z7
 20054370 Woodhill Evergreen Y121-B56 #Plattemere Weigh Up K360
 Woodhill Evergreen T136-Y121
 SITZ Drive 625F Sitz Invasion 574D
Topp Pamela 2476 #SITZ Miss Burgess 304D
 20624185 Topp Pamela 4261 #Connealy Capitalist 028
 TAD Pamela 9123

CED	BW	WW	YW	MILK	DOC	CLAW	ANGLE	FL	HP	YH	SC	MB	RE	
2	2.9	72	131	22	26 20%	0.43 30%	0.4 20%	1	10.5	0.6 45%	1.6 15%	0.51	1.04 15%	
\$M	\$W	\$C	ANGUS ^{GS}				Act. BW	ADJ-205	ADJ-365	CURRENT SC				
75 30%	62	254					76	683	1085	41				

Topp Donna 7965,
Dam of Lot 117



119



119 TOPP DOMAIN 4766

DOB: 09/18/24 AAA: 21331871 Bull TATTOO: 4766

Woodhill Relevance
Woodhill Domain B56-J345
 20054370 Woodhill Evergreen Y121-B56

#Connealy Confidence Plus
 Woodhill Blackbird X197-Z7
 #Plattemere Weigh Up K360
 Woodhill Evergreen T136-Y121
 #HA Cowboy Up 5405
 Sitz Forever Lady Y22
 #Vin-Mar Johnny Cash 3513
 PCAR Emma E 4351

Hoffman McClintock 7792
Vin-Mar Emma E 0175
 19813930 Vin-Mar Emma E 6182

CED	BW	WW	YW	MILK	DOC	CLAW	ANGLE	FL	HP	YH	SC	MB	RE
3	2.4	85	146	28	23	0.29	0.4	1.08	14.3	0.6	1.34	0.66	0.76
		15%	15%			2%	20%		15%	45%	25%		

SM	\$W	SC	Act. BW	ADJ-205	ADJ-365	CURRENT SC
96	86	292	88	746	1208	41
5%	15%	30%				

ANGUS^{GS}

120



120 TOPP DOMAIN 4771

DOB: 09/20/24 AAA: 21320264 Bull TATTOO: 4771

Woodhill Relevance
Woodhill Domain B56-J345
 20054370 Woodhill Evergreen Y121-B56

#Connealy Confidence Plus
 Woodhill Blackbird X197-Z7
 #Plattemere Weigh Up K360
 Woodhill Evergreen T136-Y121
 #Basin Payweight 1682
 Poss Ellunamere 5525
 #SVA The Donald 4030
 Topp Barbara 5432

Poss ATM
Topp Barbara 1612
 20324944 Topp Barbara 8305

CED	BW	WW	YW	MILK	DOC	CLAW	ANGLE	FL	HP	YH	SC	MB	RE
5	2.9	79	145	21	31	0.51	0.48	1.07	10.9	0.2	1.32	0.75	0.71
		25%	15%		4%					85%	25%		

SM	\$W	SC	Act. BW	ADJ-205	ADJ-365	CURRENT SC
78	66	282	85	606	1100	38
25%						

ANGUS^{GS}



121



121 TOPP DOMAIN 4648
 DOB: 08/06/24 AAA: 21320246 Bull TATTOO: 4648

Woodhill Relevance
Woodhill Domain B56-J345
 20054370 Woodhill Evergreen Y121-B56

#Connealy Confidence Plus
 Woodhill Blackbird X197-Z7
 #Plattemere Weigh Up K360
 Woodhill Evergreen T136-Y121
 #SVA The Donald 4030
 S A V Blackbird 5297
 #Mohnen Wolf Creek 1871
 TC Barbara 5016

Topp Barron 6148
Topp Barbara 0519
 20089530 #TA Barbara 3726

CED	BW	WW	YW	MILK	DOC	CLAW	ANGLE	FL	HP	YH	SC	MB	RE
-4	4.9	81	139	26	20	0.46	0.31	1.06	12.9	0.4	0.34	0.5	0.87
		20%	25%				2%		30%	65%			30%

\$M	\$W	\$C	ANGUS ^{GS}	Act. BW	ADJ-205	ADJ-365	CURRENT SC
80	70	263		90	784	1272	39.5
25%							

122 TOPP DOMAIN 4732
 DOB: 08/30/24 AAA: 21331843 Bull TATTOO: 4732

Woodhill Relevance
Woodhill Domain B56-J345
 20054370 Woodhill Evergreen Y121-B56

#Connealy Confidence Plus
 Woodhill Blackbird X197-Z7
 #Plattemere Weigh Up K360
 Woodhill Evergreen T136-Y121
 #EF Commando 1366
 Baldrige Isabel Y69
 #SVA The Donald 4030
 TA Pamela 0601

#Baldrige 38 Special
Topp Pamela 9735
 19739260 Topp Pamela 7853

CED	BW	WW	YW	MILK	DOC	CLAW	ANGLE	FL	HP	YH	SC	MB	RE
6	2.3	79	140	21	23	0.47	0.49	1.06	12.2	0.8	1.19	0.7	1.08
		25%	20%						30%	30%			15%

\$M	\$W	\$C	ANGUS ^{GS}	Act. BW	ADJ-205	ADJ-365	CURRENT SC
78	70	315		85	632	1154	39.5
25%		20%					

123 TOPP DOMAIN 4736
 DOB: 08/31/24 AAA: 21331847 Bull TATTOO: 4736

Woodhill Relevance
Woodhill Domain B56-J345
 20054370 Woodhill Evergreen Y121-B56

#Connealy Confidence Plus
 Woodhill Blackbird X197-Z7
 #Plattemere Weigh Up K360
 Woodhill Evergreen T136-Y121
 #Sitz Investment 660Z
 #SVA Eileen 9051
 #Vin-Mar Focus In 8847
 TA Ruby 0110

#SVA The Donald 4030
Topp Ruby 6149
 18767819 #TA Ruby 2152

CED	BW	WW	YW	MILK	DOC	CLAW	ANGLE	FL	HP	YH	SC	MB	RE
4	2.3	83	147	28	29	0.41	0.41	1.11	10.6	0.4	1.31	0.66	0.79
		15%	15%		10%	25%	20%	30%		65%	25%		

\$M	\$W	\$C	ANGUS ^{GS}	Act. BW	ADJ-205	ADJ-365	CURRENT SC
84	83	307		84	637	1203	39
15%	15%	25%					

124 TOPP DOMAIN 4646
 DOB: 08/06/24 AAA: 21320244 Bull TATTOO: 4646

Woodhill Relevance
Woodhill Domain B56-J345
 20054370 Woodhill Evergreen Y121-B56

#Connealy Confidence Plus
 Woodhill Blackbird X197-Z7
 #Plattemere Weigh Up K360
 Woodhill Evergreen T136-Y121
 #Connealy Earnan 076E
 SAV Primrose 7861
 #TC Freedom 104
 TC Barbara 356

#Musgrave Big Sky
Topp Barbara 6152
 18787955 #TC Barbara 3088

CED	BW	WW	YW	MILK	DOC	CLAW	ANGLE	FL	HP	YH	SC	MB	RE
-9	6.8	80	135	23	19	0.5	0.37	1.09	10	1.1	1.08	0.15	0.99
		20%	30%				10%			10%			20%

\$M	\$W	\$C	ANGUS ^{GS}	Act. BW	ADJ-205	ADJ-365	CURRENT SC
56	55	225		93	773	1202	42.5

125



125 TOPP DOMAIN 4715
 DOB: 08/21/24 AAA: 21320255 Bull TATTOO: 4715

Woodhill Relevance #Connealy Confidence Plus
Woodhill Domain B56-J345 Woodhill Blackbird X197-Z7
 20054370 Woodhill Evergreen Y121-B56 #Plattemere Weigh Up K360
 S A V Cattlemaster 4873 Woodhill Evergreen T136-Y121
Topp Erianna 1652 #Connealy Consensus 7229
 20331457 S A V Emblynette 7545
 Topp Erianna 7879 #SVA The Donald 4030
 Topp Erianna 4250

CED	BW	WW	YW	MILK	DOC	CLAW	ANGLE	FL	HP	YH	SC	MB	RE
6	4.1	84 15%	139 25%	19	19	0.29 2%	0.36 10%	1.13 20%	9.1	0.2 85%	0.82	0.69	0.98 20%
\$M	\$W	\$C	ANGUS ^{GS}				Act. BW	ADJ-205	ADJ-365	CURRENT SC			
81 20%	69	292 30%					84	664	1154	39			

126 TOPP DOMAIN 4764
 DOB: 09/18/24 AAA: 21331870 Bull TATTOO: 4764

Woodhill Relevance #Connealy Confidence Plus
Woodhill Domain B56-J345 Woodhill Blackbird X197-Z7
 20054370 Woodhill Evergreen Y121-B56 #Plattemere Weigh Up K360
 Topp United 9015 Woodhill Evergreen T136-Y121
Topp Ruby 1632 #Musgrave Aviator
 20338149 Topp Ruby 9847 Topp Blackbird 6078
 TC Freal 625
 #Topp Ruby 7861

CED	BW	WW	YW	MILK	DOC	CLAW	ANGLE	FL	HP	YH	SC	MB	RE
3	2.6	81 20%	136 25%	22	22	0.46	0.33 3%	1.07	12	0.6 45%	0.39	0.57	0.25
\$M	\$W	\$C	ANGUS ^{GS}				Act. BW	ADJ-205	ADJ-365	CURRENT SC			
83 20%	73	263					87	679	1140	40			

127 TOPP DOMAIN 4773
 DOB: 09/21/24 AAA: 21320265 Bull TATTOO: 4773

Woodhill Relevance #Connealy Confidence Plus
Woodhill Domain B56-J345 Woodhill Blackbird X197-Z7
 20054370 Woodhill Evergreen Y121-B56 #Plattemere Weigh Up K360
 SITZ Drive 625F Woodhill Evergreen T136-Y121
Topp Ruby 1594 Sitz Invasion 574D
 20324913 Topp Ruby 9706 #SITZ Miss Burgess 304D
 #S S Niagara Z29
 TA Ruby 3711

CED	BW	WW	YW	MILK	DOC	CLAW	ANGLE	FL	HP	YH	SC	MB	RE
-2	2.4	72	131	26	28 15%	0.47	0.44	1.04	15.4 10%	0	0.39	0.55	1.07 15%
\$M	\$W	\$C	ANGUS ^{GS}				Act. BW	ADJ-205	ADJ-365	CURRENT SC			
94 10%	71	304 25%					92	657	1079	39			



Topp Ruby 1632, Dam of Lot 126

128



128 TOPP STANDOUT 4700
 DOB: 08/14/24 AAA: 21320252 Bull TATTOO: 4700

#S S Niagara Z29
Topp Standout 1072
 20131233 Topp Ruby 5307

Baldrige Drag Iron
Topp Barbara 2369
 20642192 Topp Barbara 8347

#Hoover Dam
 Jet S S X144
 #Mohnen Wolf Creek 1871
 TA Ruby 3708
 #Hoover No Doubt
 Baldrige Isabel C024
 #SVA The Donald 4030
 Topp Barbara 5022

CED	BW	WW	YW	MILK	DOC	CLAW	ANGLE	FL	HP	YH	SC	MB	RE	
4	2.6	67	128	20	25 25%	0.43 30%	0.47	1.19 4%	10.3	0.6 45%	0.15	0.71	0.71	
\$M	\$W	\$C	ANGUS ^{GS}				Act. BW	ADJ-205	ADJ-365	CURRENT SC				
58	45	262	ANGUS ^{GS}				77	696	1085	38.5				

129 TOPP STANDOUT 4662
 DOB: 08/08/24 AAA: +21320269 Bull TATTOO: 4662

#S S Niagara Z29
Topp Standout 1072
 20131233 Topp Ruby 5307

#Basin Payweight 1075
#Topp Ruby 7002
 18804554 TC Ruby 6530

#Hoover Dam
 Jet S S X144
 #Mohnen Wolf Creek 1871
 TA Ruby 3708
 #Vermilion Payweight J847
 Basin Lucy 3829
 Diamond Yellowstone 975P
 TC Ruby 0224

CED	BW	WW	YW	MILK	DOC	CLAW	ANGLE	FL	HP	YH	SC	MB	RE	
6	1.6	70	135 30%	26	27 15%	0.54	0.47	1.06	13.5 25%	0.9 15%	0.68	0.69	0.59	
\$M	\$W	\$C	ANGUS ^{GS}				Act. BW	ADJ-205	ADJ-365	CURRENT SC				
50	59	291	ANGUS ^{GS}				83	619	1081	39				

130 TOPP STANDOUT 4699
 DOB: 08/13/24 AAA: +21320270 Bull TATTOO: 4699

#S S Niagara Z29
Topp Standout 1072
 20131233 Topp Ruby 5307

#Basin Payweight 1075
#Topp Ruby 7002
 18804554 TC Ruby 6530

#Hoover Dam
 Jet S S X144
 #Mohnen Wolf Creek 1871
 TA Ruby 3708
 #Vermilion Payweight J847
 Basin Lucy 3829
 Diamond Yellowstone 975P
 TC Ruby 0224

CED	BW	WW	YW	MILK	DOC	CLAW	ANGLE	FL	HP	YH	SC	MB	RE	
4	1.9	57	102	13	23	0.56	0.51	1.16 10%	15 10%	0.3 75%	0.05	0.18	0.47	
\$M	\$W	\$C	ANGUS ^{GS}				Act. BW	ADJ-205	ADJ-365	CURRENT SC				
46	29	206	ANGUS ^{GS}				86	608	982	38				



Topp Ruby 7002, Dam of Lots 129 & 130



Casino Constable T34



Topp Marcia 9044

Here she is again — the proven Marcia 9044 cow continuing to stamp her influence.

These flush brothers are sired by Casino Constable and backed by the ever-reliable Marcia 9044. After calving out the first Constable daughters, we are even more confident in the maternal power and long-term value this mating offers.

This set is bigger framed, free moving, and built to be problem-free cattle. They combine structural correctness with added growth and extension, giving them the kind of look that works in progressive commercial operations

The real excitement lies in the females these bulls will leave behind. If the first Constable daughters are any indication, udder quality should be exceptional: tight, level udders with ideal teat size and placement.



131 TOPP CONSTABLE 4708
 DOB: 08/17/24 AAA: +21330627 Bull TATTOO: 4708

#LD Capitalist 316
Casino Constable T34
 19904224
 Elbanna of Conanga 1209

#Connealy Capitalist 028
 LD Dixie Erica 2053
 #Connealy Consensus
 Elbasta of Conanga 9703
 #Sitz Investment 660Z
 #SVA Eileen 9051
 #Musgrave Big Sky
 TA Marcia 0616

#SVA The Donald 4030
Topp Marcia 9044
 19511321
 Topp Marcia 7012

CED	BW	WW	YW	MILK	DOC	CLAW	ANGLE	FL	HP	YH	SC	MB	RE
10	2.3	91	157	21	30	0.42	0.4	1.09	10.7	0.7	1.31	0.77	0.95
20%		5%	10%		10%	25%	20%			35%	25%		25%

\$M	\$W	\$C	ANGUS GS	Act. BW	ADJ-205	ADJ-365	CURRENT SC
93	84	316		87	791	1295	43
10%	15%	20%					

Flush Brothers
 LOTS 131 - 133



132



132 TOPP CONSTABLE 4655
 DOB: 08/07/24 AAA: +21330618 Bull TATTOO: 4655

CED	BW	WW	YW	MILK	DOC	CLAW	ANGLE	FL	HP	YH	SC	MB	RE
5	3.8	93 4%	157 10%	33 15%	36 1%	0.33 5%	0.31 2%	1.11 30%	13.9 20%	0.8 25%	1.58 15%	0.5	1.1 15%

\$M	\$W	\$C	ANGUS ^{GS}	Act. BW	ADJ-205	ADJ-365	CURRENT SC
113 1%	97 3%	346 10%		79	791	1202	39

133 TOPP CONSTABLE 4721
 DOB: 08/24/24 AAA: +21330632 Bull TATTOO: 4721

CED	BW	WW	YW	MILK	DOC	CLAW	ANGLE	FL	HP	YH	SC	MB	RE
3 %	4.4	88 10%	151 10%	22	33 2%	0.42 25%	0.44	1.15 15%	10.8	0.4 65%	1.57 15%	0.57	0.82

\$M	\$W	\$C	ANGUS ^{GS}	Act. BW	ADJ-205	ADJ-365	CURRENT SC
100 3%	76 30%	306 25%		84	631	957	41

Thank You

Thank you for supporting our sale.

Our goal isn't simply to offer you black Angus bulls; our goal is to offer you the genetics with the consistent, predictable performance you need to improve your overall profitability.



134



134 TOPP PROLIFIC 4615
 DOB: 08/02/24 AAA: 21332377 Bull TATTOO: 4615

Ellingson Profound 8155 #S Powerpoint WS 5503
Ellingson Prolific #EA Rosetta 6157
 20136857 #EA Queen 8070
 Vin-Mar Pinpoint 7563 #Mill Brae Identified 4031
Vin-mar Lady Jaye 9143 Vin-Mar Flower 5131
 19515944 Jacs Lady Jaye 6585 #K C F Bennett Fortress
 Crazy K Lady Jaye 3364

CED	BW	WW	YW	MILK	DOC	CLAW	ANGLE	FL	HP	YH	SC	MB	RE
1	2.6	83 15%	146 15%	24	21	0.44	0.33 3%	1.02	11	0.6 45%	1	0.53	0.43

\$M	\$W	\$C	ANGUS ^{GS}	Act. BW	ADJ-205	ADJ-365	CURRENT SC
68	76 30%	270		77	747	1240	41

135 TOPP PROLIFIC 4671
 DOB: 08/10/24 AAA: 21344371 Bull TATTOO: 4671

Ellingson Profound 8155 #S Powerpoint WS 5503
Ellingson Prolific #EA Rosetta 6157
 20136857 #EA Queen 8070
 TC Freal 625 #EF Authentic 0829
Topp Barbara 8348 TC Grmaker 4063
 19419586 Topp Barbara 6169 #Musgrave Big Sky
 #TC Barbara 3088

CED	BW	WW	YW	MILK	DOC	CLAW	ANGLE	FL	HP	YH	SC	MB	RE
1	3.4	85 15%	138 25%	17	21	0.39 15%	0.29 1%	1.2 3%	11.9	0.8 25%	0.77	0.43	0.79

\$M	\$W	\$C	ANGUS ^{GS}	Act. BW	ADJ-205	ADJ-365	CURRENT SC
98 4%	71	290		83	642	1106	41



Vin-mar Lady Jaye 9143,
 Dam of Lot 134



Topp Barbara 8348,
 Dam of Lot 135



136



136 TOPP PROLIFIC 4643
 DOB: 08/05/24 AAA: 21332300 Bull TATTOO: 4643

Ellingson Profound 8155 #S Powerpoint WS 5503
 #EA Rosetta 6157
 #Koupal Juneau 797
 EA Queen 2350
 SITZ Drive 625F Sitz Invasion 574D
 #SITZ Miss Burgess 304D
 #SVA The Donald 4030
 Topp Georgina 9733 Topp Georgina 6107

CED	BW	WW	YW	MILK	DOC	CLAW	ANGLE	FL	HP	YH	SC	MB	RE
5	0.4 30%	86 10%	150 10%	29 30%	20	0.34 10%	0.34 4%	1.16 10%	14.4 15%	0.7 35%	0.3	0.32	0.46

SM	SW	SC	ANGUS ^{GS}	Act. BW	ADJ-205	ADJ-365	CURRENT SC
92 10%	90 10%	280		77	807	1300	38.5

137



137 TOPP PROLIFIC 4650
 DOB: 08/06/24 AAA: 21332297 Bull TATTOO: 4650

Ellingson Profound 8155 #S Powerpoint WS 5503
 #EA Rosetta 6157
 #Koupal Juneau 797
 EA Queen 2350
 Topp Binford 8343 #HA Cowboy Up 5405
 #TA Ruby 3753
 #Topp Barbara 5374 TA 5016 Dash 3831
 TA Barbara 3750

CED	BW	WW	YW	MILK	DOC	CLAW	ANGLE	FL	HP	YH	SC	MB	RE
1	2.7 15%	84 15%	147 15%	21	14	0.3 3%	0.31 2%	1.05	13.6 25%	0.4 65%	0.79	0.23	0.49

SM	SW	SC	ANGUS ^{GS}	Act. BW	ADJ-205	ADJ-365	CURRENT SC
71	71	227		74	621	1115	40

138



138 TOPP PROLIFIC 4712
 DOB: 08/19/24 AAA: 21332308 Bull TATTOO: 4712

Ellingson Profound 8155 #S Powerpoint WS 5503
Ellingson Prolific #EA Rosetta 6157
 20136857 #EA Queen 8070
 EA Queen 2350
 Poss ATM #Basin Payweight 1682
Topp Ruby 1626 Poss Ellunamere 5525
 20324901 Topp Ruby 8369 #SVA The Donald 4030
 TA Ruby 3746

CED	BW	WW	YW	MILK	DOC	CLAW	ANGLE	FL	HP	YH	SC	MB	RE
-1	2.8	89 10%	151 10%	20	21	0.29 2%	0.3 2%	1.14 15%	11.4	0.6 45%	0.85	0.74	0.5
\$M	\$W	\$C	ANGUS ^{GS}				Act. BW	ADJ-205	ADJ-365	CURRENT SC			
86 15%	77 25%	287	ANGUS ^{GS}				84	707	1216	40			

139 TOPP PROLIFIC 4656
 DOB: 08/07/24 AAA: 21332303 Bull TATTOO: 4656

Ellingson Profound 8155 #S Powerpoint WS 5503
Ellingson Prolific #EA Rosetta 6157
 20136857 #EA Queen 8070
 EA Queen 2350
 Poss ATM #Basin Payweight 1682
Topp Barbara 1523 Poss Ellunamere 5525
 20324946 Topp Barbara 9759 TC Freal 625
 Topp Barbara 7810

CED	BW	WW	YW	MILK	DOC	CLAW	ANGLE	FL	HP	YH	SC	MB	RE
3	3.3	97 2%	175 1%	24	25	0.52 25%	0.39 15%	1	8	1.1 10%	1.11	0.52	0.55
\$M	\$W	\$C	ANGUS ^{GS}				Act. BW	ADJ-205	ADJ-365	CURRENT SC			
51 15%	85 15%	265	ANGUS ^{GS}				82	673	1134	38			

140 TOPP PROLIFIC 4707
 DOB: 08/16/24 AAA: 21332327 Bull TATTOO: 4707

Ellingson Profound 8155 #S Powerpoint WS 5503
Ellingson Prolific #EA Rosetta 6157
 20136857 #EA Queen 8070
 EA Queen 2350
 #S A V President 6847 #Coleman Charlo 0256
Topp Barbara 0498 S A V Blackcap May 4136
 20132367 #Topp Barbara 5310 #Connealy Capitalist 028
 TC Barbara 5016

CED	BW	WW	YW	MILK	DOC	CLAW	ANGLE	FL	HP	YH	SC	MB	RE
2	3	87 10%	146 15%	19	17	0.31 3%	0.3 2%	1.18 10%	13 30%	0.2 85%	0.38	1.13 20%	0.46
\$M	\$W	\$C	ANGUS ^{GS}				Act. BW	ADJ-205	ADJ-365	CURRENT SC			
104 2%	79 25%	328 15%	ANGUS ^{GS}				74	628	1020	38			

141 TOPP PROLIFIC 4640
 DOB: 08/05/24 AAA: 21332334 Bull TATTOO: 4640

Ellingson Profound 8155 #S Powerpoint WS 5503
Ellingson Prolific #EA Rosetta 6157
 20136857 #EA Queen 8070
 EA Queen 2350
 Topp Binford 8343 #HA Cowboy Up 5405
Topp Pride 0469 #TA Ruby 3753
 20127325 #TA Pride 3752 #Mohnen Wolf Creek 1871
 TA Pride 1327

CED	BW	WW	YW	MILK	DOC	CLAW	ANGLE	FL	HP	YH	SC	MB	RE
3	2.6	105 1%	176 1%	26	25	0.34 10%	0.36 10%	1.11 30%	13.6 25%	1.1 10%	0.9	0.44	0.83
\$M	\$W	\$C	ANGUS ^{GS}				Act. BW	ADJ-205	ADJ-365	CURRENT SC			
84 15%	100 2%	288	ANGUS ^{GS}				86	776	1291	42			



142



142 TOPP DRIVE 4755
 DOB: 09/11/24 AAA: 21320261 Bull TATTOO: 4755

Sitz Invasion 574D
SITZ Drive 625F
 19102562 #SITZ Miss Burgess 304D

SITZ Drive 625F
Topp Barbara 2345
 20622467 Topp Barbara 0518

#Connealy Conquest
 #Sitz Supermama 173Z
 Sitz Game Day 748a
 SITZ Miss Burgess 138Y
 Sitz Invasion 574D
 #SITZ Miss Burgess 304D
 Topp Barron 6148
 #Topp Barbara 4323

CED	BW	WW	YW	MILK	DOC	CLAW	ANGLE	FL	HP	YH	SC	MB	RE
7	2.8	72	132	25	24 30%	0.32 4%	0.41 20%	1.13 20%	12.3	0.5 55%	0.61	0.47	0.8

\$M	\$W	\$C	Act. BW	ADJ-205	ADJ-365	CURRENT SC
84 15%	64	240	78	778	1279	40

ANGUS^{GS}

143 TOPP DRIVE 4728
 DOB: 08/29/24 AAA: 21320271 Bull TATTOO: 4728

Sitz Invasion 574D
SITZ Drive 625F
 19102562 #SITZ Miss Burgess 304D

#Mohren South Dakota 402
#Topp Georgina 9819
 19863037 Topp Forever 5009

#Connealy Conquest
 #Sitz Supermama 173Z
 Sitz Game Day 748a
 SITZ Miss Burgess 138Y
 Mohren Density 730
 Mohren Jilt 539
 #Mohren Wolf Creek 1871
 TC Forever 6123

CED	BW	WW	YW	MILK	DOC	CLAW	ANGLE	FL	HP	YH	SC	MB	RE
7	0.7	66	116	26	15	0.43 30%	0.51	1.03	10.9	0.5 55%	0.09	0.59	0.44

\$M	\$W	\$C	Act. BW	ADJ-205	ADJ-365	CURRENT SC
61	65	237	86	722	1213	39

ANGUS^{GS}



144



144 TOPP LEVEE 4747
 DOB: 09/04/24 AAA: 21320260 Bull TATTOO: 4747

Raven Levee 3125 #Hoover Dam
Raven Levee I708 Brazila of Conanga 3991 839A
 20316180 Sitz Emma E 2738 #Connealy Thunder
 Sitz Emma E 2253
 Hamco Raptor 3F #Quaker Hill Rampage 0A36
Topp Pride 0503 Topp Peggy 6055
 20127353 Topp Pride 5446 #Mohnen Wolf Creek 1871
 TC Pride 4226

CED	BW	WW	YW	MILK	DOC	CLAW	ANGLE	FL	HP	YH	SC	MB	RE
11 15%	1.3	79 25%	140 20%	29 30%	23	0.57	0.45	1.12 25%	13.4 25%	0.5 55%	0.47	0.23	0.78
\$M	\$W	\$C	ANGUS ^{GS}				Act. BW	ADJ-205	ADJ-365	CURRENT SC			
80 25%	83 15%	273	ANGUS ^{GS}				89	814	1305	39			

145 TOPP LEVEE 4717
 DOB: 08/21/24 AAA: 21320256 Bull TATTOO: 4717

Raven Levee 3125 #Hoover Dam
Raven Levee I708 Brazila of Conanga 3991 839A
 20316180 Sitz Emma E 2738 #Connealy Thunder
 Sitz Emma E 2253
 #Musgrave Big Sky #Connealy Earnan 076E
Topp Barbara 7858 SAV Primrose 7861
 19165050 Topp Barbara 4317 Sitz Icon 1054
 TC Barbara 5016

CED	BW	WW	YW	MILK	DOC	CLAW	ANGLE	FL	HP	YH	SC	MB	RE
3	2.8	82 20%	141 20%	35 10%	18	0.5	0.55	1.12 25%	12	0.8 25%	1.58 15%	0.23	0.48
\$M	\$W	\$C	ANGUS ^{GS}				Act. BW	ADJ-205	ADJ-365	CURRENT SC			
81 20%	90 10%	260	ANGUS ^{GS}				85	618	1133	43			

146 TOPP LEVEE 4762
 DOB: 09/17/24 AAA: 21320263 Bull TATTOO: 4762

Raven Levee 3125 #Hoover Dam
Raven Levee I708 Brazila of Conanga 3991 839A
 20316180 Sitz Emma E 2738 #Connealy Thunder
 Sitz Emma E 2253
 #HA Cowboy Up 5405 HA Outside 3008
#Topp Pride 7894 #HA Blackcap Lady 1602
 19165146 Topp Pride 5406 #Mohnen Wolf Creek 1871
 TC Pride 4226

CED	BW	WW	YW	MILK	DOC	CLAW	ANGLE	FL	HP	YH	SC	MB	RE
-5	5.4	81 20%	142 20%	21	23	0.52	0.44	1.05	12.6	0.8 25%	1.01	0.14	0.51
\$M	\$W	\$C	ANGUS ^{GS}				Act. BW	ADJ-205	ADJ-365	CURRENT SC			
60	59	221	ANGUS ^{GS}				104	695	1213	39			

147 TOPP LEVEE 4784
 DOB: 10/01/24 AAA: 21320268 Bull TATTOO: 4784

Raven Levee 3125 #Hoover Dam
Raven Levee I708 Brazila of Conanga 3991 839A
 20316180 Sitz Emma E 2738 #Connealy Thunder
 Sitz Emma E 2253
 Topp Craftsman 2129 #V D A R Really Windy 4097
Topp Donna 7924 TC Barbara 5016
 19158676 Topp Donna 5319 #Connealy Capitalist 028
 Coleman Donna 0176

CED	BW	WW	YW	MILK	DOC	CLAW	ANGLE	FL	HP	YH	SC	MB	RE
4	3	63	98	16	19	0.45	0.51	1.05	10.8	0.1 90%	1.02	0.45	0.36
\$M	\$W	\$C	ANGUS ^{GS}				Act. BW	ADJ-205	ADJ-365	CURRENT SC			
62	46	201	ANGUS ^{GS}				92	606	1067	40			

148



148 TOPP RAINMAKER 4709
 DOB: 08/17/24 AAA: 21331907 Bull TATTOO: 4709

Basin Rainmaker 2704 #Basin Rainmaker P175
TBasin Rainmaker 4404 #Basin Erica 7520 BV
 17913751 Basin Joy 1036 #Basin Payweight 1075
 Basin Joy 566T
 Baldrige Drag Iron #Hoover No Doubt
Topp Barbara 2330 Baldrige Isabel C024
 20642204 Topp Barbara 4317 Sitz Icon 1054
 TC Barbara 5016

CED	BW	WW	YW	MILK	DOC	CLAW	ANGLE	FL	HP	YH	SC	MB	RE
3	1.5	72	126	31 20%	20	0.46	0.41 20%	1.13 20%	12.5	0.5 55%	1.06	0.41	0.61
\$M	\$W	\$C	ANGUS ^{GS}				Act. BW	ADJ-205	ADJ-365	CURRENT SC			
93 10%	80 20%	259					72	684	1190	40			

149 TOPP RAINMAKER 4685
 DOB: 08/12/24 AAA: 21331909 Bull TATTOO: 4685

Basin Rainmaker 2704 #Basin Rainmaker P175
TBasin Rainmaker 4404 #Basin Erica 7520 BV
 17913751 Basin Joy 1036 #Basin Payweight 1075
 Basin Joy 566T
 S A V Cattlemaster 4873 #Connealy Consensus 7229
Topp Barbara 2405 S A V Emblynette 7545
 20628392 Topp Barbara 5376 #Mohnen Wolf Creek 1871
 TC Barbara 6044

CED	BW	WW	YW	MILK	DOC	CLAW	ANGLE	FL	HP	YH	SC	MB	RE
9 30%	0.3 30%	56	94	35 10%	15	0.28 2%	0.37 10%	1.11 30%	10.6	0.2 85%	1.38 20%	0.75	0.68
\$M	\$W	\$C	ANGUS ^{GS}				Act. BW	ADJ-205	ADJ-365	CURRENT SC			
83 20%	68	270					71	644	1044	41			

150 TOPP RAINMAKER 4749
 DOB: 09/04/24 AAA: 21331920 Bull TATTOO: 4749

Basin Rainmaker 2704 #Basin Rainmaker P175
TBasin Rainmaker 4404 #Basin Erica 7520 BV
 17913751 Basin Joy 1036 #Basin Payweight 1075
 Basin Joy 566T
 #Freys Cowboy Logic #HA Cowboy Up 5405
Vin-Mar Erica of Ellston 115 F A R Princess 148Z
 20361321 Erica of Ellston V440 #Baldrige 38 Special
 Erica of Ellston S421

CED	BW	WW	YW	MILK	DOC	CLAW	ANGLE	FL	HP	YH	SC	MB	RE
4	1.5	69	122	24	16	0.35 10%	0.33 3%	1.16 10%	13.8 20%	0.3 75%	0.97	0.7	0.4
\$M	\$W	\$C	ANGUS ^{GS}				Act. BW	ADJ-205	ADJ-365	CURRENT SC			
88 15%	66	264					82	672	1088	37			

Sale Location





Females



201



201 TOPP BARBARA 5081
 DOB: 01/12/25 AAA: 21429929 Female TATTOO: 5081

#S A V Rainfall 6846
Baldrige Jigsaw J523
 20047698 Baldrige Isabel G336

#SVA The Donald 4030
#Topp Barbara 7873
 19158667 #Topp Barbara 4323

#Coleman Charlo 0256
 S A V Blackcap May 4136
 #Spring Cove Reno 4021
 Baldrige Isabel Y69
 #Sitz Investment 660Z
 #SVA Eileen 9051
 Sitz Icon 1054
 TC Barbara 5016

Act BW
93
ADJ 205
645

CED	BW	WW	YW	MILK	DOC	CLAW	ANGLE	FL	HP	YH	SC	MB	RE
1	3.9	79 25%	146 15%	27	16	0.31 3%	0.25 1%	1.15 10%	10.8	0.2	1.28 25%	0.7	0.35

\$M	\$W	\$C	ANGUS ^{SS}	DAMS RATIOS	Calving Interval	BR	WR	YR	Calves
91 10%	71	279			407*	101	103	101	5

*Donor Dam

A real sale feature! Topp Barbara 5081 will carry on the Barbara family tradition of fertility, functionality, longevity, and productivity. A maternal sister to Topp Mobile 0578, lot 201 is an ideal female to become a foundation type cow in her new program. Broodiness with femininity, sound structured, great feet, and cow power stacked throughout her pedigree. With Y69, 4136, 7873, and 5016 in her 3-generation pedigree, we have never felt more confident in a heifers breeding potential.



Topp Barbara 7873, Dam



Topp Mobile 0578, Maternal Brother



Topp Marcia 9044, Dam of Lot 202



202 TOPP MARCIA 5046

DOB: 01/09/25 AAA: 21439890 Female TATTOO: 5046

Woodhill Relevance
Woodhill Domain B56-J345
 20054370 Woodhill Evergreen Y121-B56
 #SVA The Donald 4030
Topp Marcia 9044
 19511321 Topp Marcia 7012

#Connealy Confidence Plus
 Woodhill Blackbird X197-Z7
 #Plattemere Weigh Up K360
 Woodhill Evergreen T136-Y121
 #Sitz Investment 660Z
 #SVA Eileen 9051
 #Musgrave Big Sky
 TA Marcia 0616

Act BW
87
ADJ 205
695

CED	BW	WW	YW	MILK	DOC	CLAW	ANGLE	FL	HP	YH	SC	MB	RE
1	2.9	82 20%	154 10%	28	24 30%	0.48	0.39 15%	1.01	13 30%	0.7	1.28 25%	0.54	1.16 10%

\$M	\$W	\$C	ANGUS ^{GS}	DAMS RATIOS	Calving Interval	BR	WR	YR	Calves
59	71	276			438*	100	114	108	3

*Donor Dam



Topp Ruby 5307, Granddam of Lot 203



203 TOPP RUBY 5103

DOB: 01/15/25 AAA: 21429941 Female TATTOO: 5103

Ellingson Profound 8155
Ellingson Prolific
 20136857 #EA Queen 8070
 #Baldridge 38 Special
Topp Ruby 1017
 20108173 Topp Ruby 5307

#S Powerpoint WS 5503
 #EA Rosetta 6157
 #Koupal Juneau 797
 EA Queen 2350
 #EF Commando 1366
 Baldridge Isabel Y69
 #Mohnen Wolf Creek 1871
 TA Ruby 3708

Act BW
82
ADJ 205
688

CED	BW	WW	YW	MILK	DOC	CLAW	ANGLE	FL	HP	YH	SC	MB	RE
5	1.2	92 5%	157 10%	22	16	0.28 2%	0.26 1%	1.09	13.1 25%	1.1 10%	0.99	0.71	0.42

\$M	\$W	\$C	ANGUS ^{GS}	DAMS RATIOS	Calving Interval	BR	WR	YR	Calves
89 10%	88 10%	272			366	93	113	108	2





204 TOPP PRIDE 5012

DOB: 01/04/25 AAA: 21429923 Female TATTOO: 5012

#S A V Rainfall 6846 #Coleman Charlo 0256
 S A V Blackcap May 4136
 #Spring Cove Reno 4021
 Baldrige Isabel Y69
 #Mohnen Wolf Creek 1871 #H A Image Maker 0415
 Mohnen Jilt 1283
 #Topp Pride 8044 #TC Freedom 104
 TC Pride 4226 #TC Pride 8067

Act BW	87
ADJ 205	678

CED	BW	WW	YW	MILK	DOC	CLAW	ANGLE	FL	HP	YH	SC	MB	RE
5	2.7	68	126	29 30%	19	0.27 1%	0.34 4%	1.04	11.2	0.4	1.13	0.64	0.51

\$M	\$W	\$C
65	59	258

ANGUS GS

DAMS RATIOS	Calving Interval	BR	WR	YR	Calves
	364	106	105	105	6

205 TOPP BARBARA 5021

DOB: 01/06/25 AAA: 21381532 Female TATTOO: 5021

#S S Niagara Z29 #Hoover Dam
 Jet S S X144
 #Mohnen Wolf Creek 1871
 TA Ruby 3708
 S A V Cattlemaster 4873 #Connealy Consensus 7229
 S A V Emblynette 7545
 #Topp Standout 1072 Topp Ruby 5307
 #HA Cowboy Up 5405
 Topp Barbara 7810 #Topp Barbara 5374

Act BW	72
ADJ 205	655

CED	BW	WW	YW	MILK	DOC	CLAW	ANGLE	FL	HP	YH	SC	MB	RE
8	1.3	81 20%	148 15%	20 25%	25	0.5	0.51	1.16 10%	11.6	0.9 20%	1.17 30%	0.53	0.9

\$M	\$W	\$C
53	65	263

ANGUS GS

DAMS RATIOS	Calving Interval	BR	WR	YR	Calves
		100	105		1

206 TOPP MARCIA 5105

DOB: 01/15/25 AAA: 21381544 Female TATTOO: 5105

Sitz Domain 12371 Sitz Logo 8148
 #Harrell Bulldog 19L #Sitz Emma E 129
 SITZ Everelda Entense 305C Sitz Identity 7333
 SITZ Everelda Entense 190X
 Topp Standout 1072 #S S Niagara Z29
 Topp Ruby 5307
 #Topp Marcia 3125 TC Freal 625
 Topp Marcia 0178 Topp Marcia 7039

Act BW	85
ADJ 205	685

CED	BW	WW	YW	MILK	DOC	CLAW	ANGLE	FL	HP	YH	SC	MB	RE
-1	3.4	83 15%	143 20%	23	26 20%	0.28 2%	0.45	1.08	11.9	0.7	1.44 20%	0.95	0.81

\$M	\$W	\$C
83 15%	72	305 25%

ANGUS GS

DAMS RATIOS	Calving Interval	BR	WR	YR	Calves
		116	110		1

207



207 TOPP PRIDE 5194

DOB: 02/24/25 AAA: 21436678 Female TATTOO: 5194

Raven Levee 3125 #Hoover Dam
Raven Levee I708 Brazila of Conanga 3991 839A
 20316180 Sitz Emma E 2738 #Connealy Thunder
 Sitz Emma E 2253
 #Mohnen Wolf Creek 1871 #H A Image Maker 0415 **Act BW**
#Topp Pride 8080 Mohnen Jilt 1283 89
 19225372 TC Pride 4226 #TC Freedom 104 **ADJ 205**
 #TC Pride 8067 719

CED	BW	WW	YW	MILK	DOC	CLAW	ANGLE	FL	HP	YH	SC	MB	RE
8	2	71	122	25	25	0.55	0.51	1.02	13.8	0.6	1.67	0.12	0.39
					25%				20%		10%		

SM	\$W	SC	ANGUS GS	DAMIS RATIOS	Calving Interval	BR	WR	YR	Calves
78	70	225			373	103	107	99	6
25%									

208 TOPP MARCIA 5111

DOB: 01/16/25 AAA: 21429950 Female TATTOO: 5111

Basin Rainmaker 2704 #Basin Rainmaker P175
#Basin Rainmaker 4404 #Basin Erica 7520 BV
 17913751 Basin Joy 1036 #Basin Payweight 1075
 Basin Joy 566T
 Hamco Raptor 3F #Quaker Hill Rampage 0A36 **Act BW**
Topp Marcia 1065 Topp Peggy 6055 78
 20105450 Topp Marcia 7035 #Musgrave Big Sky **ADJ 205**
 #TA Marcia 0620 666

CED	BW	WW	YW	MILK	DOC	CLAW	ANGLE	FL	HP	YH	SC	MB	RE
7	1.4	75	130	27	21	0.42	0.36	1.07	12.4	0.5	0.48	0.38	0.89
						25%	10%						

SM	\$W	SC	ANGUS GS	DAMIS RATIOS	Calving Interval	BR	WR	YR	Calves
73	70	249			363	99	103	104	3

209 TOPP BARBARA 5039

DOB: 01/08/25 AAA: 21429798 Female TATTOO: 5039

Basin Rainmaker 2704 #Basin Rainmaker P175
#Basin Rainmaker 4404 #Basin Erica 7520 BV
 17913751 Basin Joy 1036 #Basin Payweight 1075
 Basin Joy 566T
 Hamco Raptor 3F #Quaker Hill Rampage 0A36 **Act BW**
Topp Barbara 3007 Topp Peggy 6055 89
 20749212 Topp Barbara 9759 TC Freal 625 **ADJ 205**
 Topp Barbara 7810 620

CED	BW	WW	YW	MILK	DOC	CLAW	ANGLE	FL	HP	YH	SC	MB	RE
3	3	76	132	25				0.99					
			30%	30%									

SM	\$W	SC	ANGUS GS	DAMIS RATIOS	Calving Interval	BR	WR	YR	Calves
71	61				388	121	100		1

210 TOPP PEGGY 5146

DOB: 01/28/25 AAA: 21436670 Female TATTOO: 5146

Raven Levee 3125 #Hoover Dam
Raven Levee I708 Brazila of Conanga 3991 839A
 20316180 Sitz Emma E 2738 #Connealy Thunder
 Sitz Emma E 2253
 SITZ Drive 625F #Quaker Hill Rampage 0A36 **Act BW**
Topp Peggy 1084 Topp Peggy 6055 85
 20106600 Topp Peggy 8356 #SITZ Miss Burgess 304D **ADJ 205**
 #SVA The Donald 4030 675
 #Topp Peggy 5355

CED	BW	WW	YW	MILK	DOC	CLAW	ANGLE	FL	HP	YH	SC	MB	RE
5	2.3	96	165	30	17	0.53	0.41	1.05	12.6	0.7	1.06	0.33	0.69
		3%	3%	25%			20%						

SM	\$W	SC	ANGUS GS	DAMIS RATIOS	Calving Interval	BR	WR	YR	Calves
75	98	285			368	107	106	102	3
30%	3%								



Commercial Females

This year we are offering a select group of commercial angus females that showcase the quality and consistency of Topp Angus genetics.

1. Lots will sell, gate cut, in groups of 5 with the option to take the entire group.
2. Heifers are up to date on vaccinations.
3. Heifers have been palpated to ensure breeding soundness.
4. Heifers must be picked up within 3 days of the sale unless prior arrangements have been made.
5. Commercial female videos are available online at DVAuction.com.
6. Heifers will be available for viewing at Kist Livestock, Mandan, ND April 9th – Sale Day.

LOT 301 - 320: ANGUS COMMERCIAL OPEN HEIFERS

- 20 purebred angus heifers selling without papers
- Heifers born March – April 2025
- Approximate weight 770 lbs



Paul Topp
8205 14th St NE
Grace City, ND 58445
(701) 650-8371

Cowherd centers on structural correctness, udder quality, & overall performance. Sires include Sitz Drive 625F, Harrell Bulldog 19L, & Woodhill Domain B56-J345

LOT 321 - 371: ANGUS COMMERCIAL OPEN HEIFERS

- 50 angus heifers
- Heifers born March – April 2025
- Approximate weights 800 lbs

Mac & Nicole Hoerner
9010 29th St SW
Richardton, ND 58652
(701) 290-8725 Mac
(701) 870 - 0566, Nicole

Mac & Nicole have been customers for the last 6 years, buying bulls focused on the maternal side of the pedigree that will improve the overall weight of their calf crop and improve structure and function. Their attention to detail from genetics and nutrition all the way through to vaccinations and deworming is second to none. With 5 children on the ranch, they are mindful of disposition and this quiet set of quality heifers shows it!



T A BALDRIDGE JIGSAW JS23

DOB: 5/21/21 AAA: 20047698 Bull TATTOO: J523

#Coleman Charlo 0256
#S A V Rainfall 6846
 18578963 S A V Blackcap May 4136

#O C C Paxton 730P
 Bohi Abigail 6014
 #S A V 8180 Traveler 004
 #S A V May 2397
 #KM Broken Bow 002
 Spring Cove Liza 021
 #Styles Upgrade J59
 Baldridge Isabel T935

#Spring Cove Reno 4021

Baldridge Isabel G336
 19565652 Baldridge Isabel Y69

CED	BW	WW	YW	MILK	DOC	CLAW	ANGLE	SC	HP	YH	FL	RE	MB
3	2.7	76	141	25	18	0.18	0.18	1.38	14	0.1	1.02	0.84	1.21

\$M	\$W	\$C
81	67	326



T B ELLINGSON PROLIFIC

DOB: 3/1/21 AAA: 20136857 Bull TATTOO: 1290

#S Powerpoint WS 5503
Ellingson Profound 8155
 19203612 #EA Rosetta 6157

Tehama Revere
 S Queen Essa 248
 #Connealy Capitalist 028
 #EA Blackbird 0038
 #OCC Juneau 807J
 Koupals Elba 187
 GVF Forward 0141
 EA Queen 0313

#Koupal Juneau 797

#EA Queen 8070
 19177681 EA Queen 2350

CED	BW	WW	YW	MILK	DOC	CLAW	ANGLE	SC	HP	YH	FL	RE	MB
-2	4.3	86	148	16	14	0.31	0.29	0.30	13.5	0.5	0.62	0.61	0.72

\$M	\$W	\$C
51	63	270



T C WOODHILL DOMAIN B56-J345

DOB: 01/19/21 AAA: 20054370 Bull TATTOO: J345

#Connealy Confidence Plus
Woodhill Relevance
 19197873 Woodhill Blackbird X197-Z7

#Connealy Confidence 0100
 Elbanna of Conanga 1209
 #Hoover Dam
 Woodhill Blackbird U80-X197
 #Sitz Upward 307R
 #Barbara of Plattemere 337
 #Sitz Dash 10277
 Woodhill Evergreen R229-T136

#Plattemere Weigh Up K360

Woodhill Evergreen Y121-B56
 17915915 Woodhill Evergreen T136-Y121

CED	BW	WW	YW	MILK	DOC	CLAW	ANGLE	SC	HP	YH	FL	RE	MB
1	2	85	148	19	28	0.42	0.30	0.48	9.3	0.4	0.92	1.09	0.87

\$M	\$W	\$C
66	74	294



T_D BASIN RAINMAKER 4404

DOB: 3/19/14 AAA: 17913751 Bull TATTOO: 4404

#Basin Rainmaker P175 #Basin Rainmaker 747L
Basin Rainmaker 2704 Basin Blackcap Lady 693L
 17280032 #Basin Erica 7520 BV #Basin Franchise P142
 Basin Erica 8R02BV
 #Basin Payweight 1075 #Vermillion Payweight J847
Basin Joy 1036 Basin Lucy 3829
 16935098 Basin Joy 566T #B P F Special Focus 504
 Basin Joy 204R

CED	BW	WW	YW	MILK	DOC	CLAW	ANGLE	SC	HP	YH	FL	RE	MB
6	1.4	59	108	29	24	0.33	0.36	0.64	13.7	0.1	0.94	0.6	0.68
\$M	\$W	\$C											
75	64	255											



GENEX

T_E SITZ DRIVE 625F

DOB: 02/02/18 AAA: 19102562 Bull TATTOO: 625F

#Connealy Conquest #Connealy Consensus
Sitz Invasion 574D Boka Bay of Conanga 13X
 18394876 #Sitz Supermama 173Z #Sitz Top Seed 539X
 #MCC SuperMama 7042
 Sitz Game Day 748a #GDAR Game Day 449
#SITZ Miss Burgess 304D #Sitz Pride 88T
 19093038 SITZ Miss Burgess 138Y #G A R Predestined
 Sitz Miss Burgess 112T

CED	BW	WW	YW	MILK	DOC	CLAW	ANGLE	SC	HP	YH	FL	RE	MB
11	0.1	58	111	28	19	0.35	0.48	0.44	13.5	0.3	1.10	0.35	0.54
\$M	\$W	\$C											
87	58	239											



T_F RAVEN LEVEL 1708

DOB: 03/10/21 AAA: 20316180 Bull TATTOO: 1708

#Hoover Dam #SydGen C C & 7
Raven Level 3125 #Erica of Ellston C124
 18290810 Brazila of Conanga 3991 839A Connealy Tobin
 Breesha of Conanga 1251
 #Connealy Thunder #Baldrige Kaboom K243 KCF
Sitz Emma E 2738 #Parka of Conanga 241
 15991601 Sitz Emma E 2253 Sitz Alliance 7059
 Sitz Emma E 1627

CED	BW	WW	YW	MILK	DOC	CLAW	ANGLE	SC	HP	YH	FL	RE	MB
3	2.2	82	140	27	26	0.55	0.54	1.78	16.3	0.3	1.05	0.65	0.52
\$M	\$W	\$C											
94	84	300											



T G SCHIEFELBEIN SHOWMAN 338

DOB: 1/29/18 AAA: 19260249 Bull TATTOO: 338



#JMB Traction 292
#Schiefelbein Attractive 4565
 18272797 Frosty Answer 3979

#Sitz Top Game 561X
 JMB Emulota 013
 #S A V Final Answer 0035
 Frosty Elba Lizzy 1106
 Rito 707 of Ideal 3407 7075
 S A V Blackcap May 4136
 #Sitz Upward 307R
 Frosty ND 1407 0297

#S A V Renown 3439
Frosty Elba 3745
 18297788 Frosty Upward 1100

CED	BW	WW	YW	MILK	DOC	CLAW	ANGLE	SC	HP	YH	FL	RE	MB
4	0.7	78	151	25	26	0.41	0.35	1.15	12.2	0.4	0.99	1.1	0.37

\$M	\$W	\$C
65	79	282

T H HARRELL BULLDOG 19L

DOB: 01/30/23 AAA: 20691837 Bull TATTOO: 19L



Sitz Logo 8148
Sitz Domain 12371
 19974072 #Sitz Emma E 129

#SITZ Logo 12964
 #SITZ Barbaramere Nell 912
 #Poss Achievement
 Sitz Emma E 5177
 #Sitz Identity 2575
 Sitz Ellunas Elite 20U
 #Connealy Thunder
 #Sitz Everelda Entense 1955

Sitz Identity 7333
SITZ Everelda Entense 305C
 18198759 SITZ Everelda Entense 190X

CED	BW	WW	YW	MILK	DOC	CLAW	ANGLE	SC	HP	YH	FL	RE	MB
6	-0.7	61	116	27	20	0.32	0.44	1.49	12.5	0.0	1.10	0.58	0.84

\$M	\$W	\$C
115	70	280

T / TOPP STANDOUT 1072

DOB: 01/23/21 AAA: 20131233 Bull TATTOO: 1072



#Hoover Dam
#S S Niagara Z29
 17287387 Jet S S X144

#SydGen C C & 7
 #Erica of Ellston C124
 #B/R New Day 454
 JET S S T151
 #H A Image Maker 0415
 Mohnen Jilt 1283
 SITZ Dash 11100
 TC Ruby 4076

#Mohnen Wolf Creek 1871
Topp Ruby 5307
 18435762 TA Ruby 3708

CED	BW	WW	YW	MILK	DOC	CLAW	ANGLE	SC	HP	YH	FL	RE	MB
9	-0.2	68	131	17	24	0.48	0.46	0.43	10.4	0.6	1.10	0.71	0.4

\$M	\$W	\$C
42	47	234



AMERICAN ANGUS ASSOCIATION SELECTION TOOLS

Expected Progeny Difference (EPD), is the prediction of how future progeny of each animal are expected to perform relative to the progeny of other animals listed in the database. EPDs are expressed in units of measure for the trait, plus or minus. Interim EPDs may appear on young animals when their performance has yet to be incorporated into the American Angus Association National Cattle Evaluation (NCE) procedures. This EPD will be preceded by an "I", and may or may not include the animal's own performance record for a particular trait, depending on its availability, appropriate contemporary grouping, or data edits needed for NCE.

Accuracy (ACC), is the reliability that can be placed on the EPD. An accuracy of close to 1.0 indicates higher reliability. Accuracy is impacted by the number of progeny and ancestral records included in the analysis.

PRODUCTION

Calving Ease Direct (CED), expressed as a difference in percentage of unassisted births, with a higher value indicating greater calving ease in first-calf heifers. It predicts the average difference in ease with which a sire's calves will be born when he is bred to first-calf heifers.

Birth Weight (BW), expressed in pounds, is a predictor of a sire's ability to transmit birth weight to his progeny compared to that of other sires.

Weaning Weight (WW), expressed in pounds, is a predictor of a sire's ability to transmit weaning growth to his progeny compared to that of other sires.

Yearling Weight (YW), expressed in pounds, is a predictor of a sire's ability to transmit yearling growth to his progeny compared to that of other sires.

Residual Average Daily Gain (RADG), feed efficiency expressed in pounds per day, is a predictor of a sire's genetic ability for post-weaning gain in future progeny compared to that of other sires, given a constant amount of feed consumed.

Dry Matter Intake (DMI), expressed in pounds per day, is a predictor of difference in transmitting ability for feed intake during the post-weaning phase, compared to that of other sires.

Yearling Height (YH), expressed in inches, is a predictor of a sire's ability to transmit yearling height compared to that of other sires.

Scrotal Circumference (SC), expressed in centimeters, is a predictor of the difference in transmitting scrotal size compared to that of other sires.

MANAGEMENT

Claw Set (Claw), expressed in units of claw-set score, a lower EPD is more favorable, indicating a sire will produce progeny with more symmetrical, even and appropriately spaced toes compared to another sire.

Foot Angle (Angle), expressed in units of foot-angle score, a lower EPD is more favorable, indicating a sire will produce progeny with an angle closer to 45 degrees at the pastern and appropriate toe length and heel depth compared to another sire.

Docility (DOC), expressed as a difference in yearling cattle temperament, with a higher value indicating more favorable docility in a sire's offspring compared to another sire.

Pulmonary Arterial Pressure (PAP), expressed in millimeters of Mercury (mmHg), with a lower EPD being more favorable indicating a sire should produce progeny with a lower PAP score to decrease the risk of progeny contracting high altitude disease most commonly experienced at 5,500 ft or greater in elevation.

Hair Shed (HS), expressed in units of hair shed score, with a lower EPD being more favorable. This indicates a sire should produce progeny who shed their winter coat earlier in the spring and has improved environmental adaptability in heat stressed areas and grazing endophyte-infected (hot) fescue.

MATERNAL

Heifer Pregnancy (HP), is a selection tool to increase the probability or chance of a sire's daughters becoming pregnant as first-calf heifers during a normal breeding season. A higher EPD is the more favorable direction, and the EPD is reported in percentage units.

Calving Ease Maternal (CEM), expressed as a difference in percentage of unassisted births, with a higher value indicating greater calving ease in first-calf daughters. It predicts the average ease with which a sire's daughters will calve as first-calf heifers when compared to daughters of other sires.

Maternal Milk (Milk), expressed in pounds of calf weaned, is a predictor of a sire's genetic merit for milk and mothering ability in his daughters. In other words, it is the part of the calf's weaning weight attributes to milk and mothering ability.

Teat Size (Teat), expressed in units of teat size score, with a higher EPD indicating a sire will produce daughters with smaller teat size compared to that of other sires' daughters.

Udder Suspension (UDDR), expressed in units of udder suspension score, with a higher EPD indicating a sire will produce daughters with tighter udder suspension compared to that of other sires' daughters.

Functional Longevity (FL), expressed in number of calves, is a predictor of the number of calves a sire's daughters are predicted to produce by 6 years of age compared to that of other sires' daughters. A higher EPD is the more favorable direction indicating more calves produced on average.

Mature Weight (MW), expressed in pounds, is a predictor of the difference in mature weight of daughters of a sire compared to the daughters of other sires.

Mature Height (MH), expressed in inches, is a predictor of the difference in mature height of a sire's daughters compared to daughters of other sires.

CARCASS

Carcass Weight (CW), expressed in pounds, is a predictor of the differences in hot carcass weight of a sire's progeny compared to progeny of other sires.

Marbling (Marb), expressed as a fraction of the difference in USDA marbling score of a sire's progeny compared to progeny of other sires.

Ribeye Area (RE), expressed in square inches, is a predictor of the difference in ribeye area of a sire's progeny compared to progeny of other sires.

Fat Thickness (Fat), expressed in inches, is a predictor of the differences in external fat thickness at the 12th rib (as measured between the 12th and 13th ribs) of a sire's progeny compared to progeny of other sires.

\$VALUE INDEXES

\$Value Indexes, expressed in dollars per head, are multi-trait selection indexes where a higher value suggests more profit. The \$Value is an estimate of how future progeny of each sire are expected to perform, on average, compared to progeny of other sires if sires were randomly mated to cows and if calves were exposed to the same environment.

Maternal Weaned Calf Value (SM), expressed in dollars per head, predicts profitability differences in progeny due to genetics from conception to weaning by decreasing mature cow size and improving docility, foot structure and fertility while maintaining weaning weights consistent with today's production.

Weaned Calf Value (SW), expressed in dollars per head, provides the expected difference in future progeny pre-weaning performance from birth to weaning.

Energy Value (SEN), expressed in dollar savings per cow per year with a larger value being more favorable. It assesses differences in cow energy requirements, due to maternal milk and mature cow size.

Feedlot Value (SF), expressed in dollars per head, is the expected average difference in future progeny performance for post-weaning feedlot merit (growth and feed efficiency) compared to progeny of other sires assuming producers retain ownership of cattle through the feedlot phase and sell on a carcass-weight basis.

Grid Value (SG), expressed in dollars per carcass, is the expected average difference in future progeny performance for carcass grid merit, including quality and yield grade attributes, compared to progeny of other sires.

Beef Value (SB), expressed in dollars per carcass, represents the expected average differences in the progeny post-weaning performance and carcass value compared to progeny of other sires. This index assumes commercial producers wean all male and female progeny, retain ownership of these animals through the feedlot and sell on a carcass merit grid.

Combined Value (SC), expressed in dollars per head, which includes all traits that make up both Maternal Weaned Calf Value (SM) and Beef Value (SB) with the objective that commercial producers will replace 20% of their breeding females per year with replacement heifers retained within their own herd. The remaining cull heifer and steer progeny are then assumed to be sent to the feedlot where the producers retain ownership of those cattle and sell them on a quality-based carcass merit grid.

Topp Angus

8205 14TH STREET NE
GRACE CITY, ND 5844

PRSRT
FIRST-CLASS
U.S. POSTAGE
PAID
St. Joseph, MO
Permit #2017

- 240 Angus Selling -

59 18-month old Fall Yearlings
91 Spring Yearling Bulls
10 Registered Heifers
70 Commercial Heifers

*All Bulls Cataloged
Passed Semen Evaluation*

TOPP
ANGUS



1715 40TH AVE SE
MANDAN, ND 58554



Lot 2



Lot 4



Lot 13



Lot 22